



BRIGHT IDEAS
FOR LUMINOUS
PARTNERSHIPS

— 2015 —



Bright ideas
for
luminous
partnerships

NEW CATALOGUE

EN - Our completely new 2015 catalogue isn't a standard catalogue. It's a very useful guide for your projects. This year, it has been divided in 2 parts to make reading and choosing products easier.

FR - Notre tout nouveau catalogue 2015 n'est pas un catalogue ordinaire, c'est un guide très utile pour tous vos projets. Cette année, il a été divisé en 2 parties pour faciliter la lecture et simplifier votre choix de produits.

NL - Onze gloednieuwe catalogus voor 2015 is niet zals de andere, het is een erg nuttige richtlijn voor al uw projecten. Dit jaar hebben we hem in 2 delen onderverdeeld om de leesbaarheid te vergroten en het kiezen gemakkelijker te maken.

DE - Unser neuer Katalog 2015 ist kein gewöhnlicher Katalog, sondern ein nützlicher Leitfaden für all Ihre Projekte. Wir haben ihn in zwei Teile aufgeteilt, um sowohl die Lektüre als auch die Produktwahl zu erleichtern.

ES - Nuestro nuevo Catálogo 2015 no es el catálogo de siempre, es una guía muy útil para todos sus proyectos. Este año, ha sido dividido en dos partes para facilitar su lectura y simplificar su elección de productos...

THE MAIN CATALOGUE



EN - The main catalogue contains all of our products classified by type.

FR - Le catalogue principal contient tous nos produits classés selon leur type.

NL - De hoofdcatalogus bevat al onze producten, gerangschikt volgens type.

DE - Der Hauptkatalog umfasst unsere gesamte Produktpalette, nach Art der Produkte geordnet.

ES - El catálogo principal contiene todos nuestros productos clasificados según su tipo.

THE « INSPIRATION GUIDE »

EN - The «Inspiration Guide» is our major innovation this year. It suggests creative options by giving you application ideas. A practical tool to fuel your imagination and inspire you with new creations..

FR - L'«Inspiration Guide» est la grande innovation de cette année. Il suggère des pistes créatives en vous donnant des idées d'applications. Un outil pratique pour nourrir votre imagination et vous inspirer de nouvelles créations..

NL - De «Inspiration Guide» is de grote vernieuwing van dit jaar. In dit boekje vindt u creatieve suggesties en ideeën om onze producten te gebruiken. Het is een praktisch hulpmiddel om uw verbeelding te voeden en u inspiratie te geven voor nieuwe creaties.

DE - Der «Inspiration Guide» ist völlig neu. Er zeigt kreative Lösungsvorschläge auf und weckt Ideen für mögliche Anwendungen. Ein praktisches Werkzeug, das zu neuen Kreationen inspiriert.

ES - El « Inspiration Guide » es la gran novedad de este año. Sugiere vías creativas mostrándole ideas para aplicaciones. Una herramienta práctica para alimentar su imaginación e inspirarle nuevas creaciones.



EXPLANATION OF PICTOGRAMS

INFO RÉFÉRENCES - INFO REFERENTIES - INFO REFERENCES - INFO REFERENZEN - INFO REFERENCIAS

X	Number of lamps	Nombre de lampes	Aantal lampjes	Anzahl Birnen	Número de bombillas
Y	Dimensions	Dimensions	Afmetingen	Größe	Dimensiones
Z	Colour	Couleur	Kleur	Farbe	Color


INFO

	Indoor	Intérieur	Binnengebruik	Innen	Interior
	Indoor and outdoor	Intérieur et extérieur	Binnen- en buitengebruik	Innen u. außen	Interior y exterior
	Simply-Connect product	Produit Simply-Connect	Product Simply-Connect	Simply-Connect Produkt	Producto Simply-Connect
	Low-V Connect product	Produit Low-V Connect	Product Low-V Connect	Low-V Connect Produkt	Producto Low-V Connect
	Animated product	Produit animé	Knipperprodukt	Animiert	Artículo animado
	Random flash technology	Random flash technology	Random flash technology	Random flash technology	Random flash technology
	Diameter	Diamètre	Diameter	Durchmesser	Diámetro
	No powercord	Sans cable d'alimentation	Geen stroomsnoer	Ohne Netzkabel	Sin enchufe

LAMPE - LAMP - BULB - BIRNE - BOMBILLA

	W	White	Blanc	Wit	Weiss	Blanco		MC	Multi-coloured	Multicolore	Multicolor	Bunt	Multicolor
	UW	Warm white	Blanc chaud	Warm wit	Warm weiss	Blanco Cálido		G	Green	Vert	Groen	Grün	Verde
	B	Blue	Bleu	Blauw	Blau	Azul		RGB	Red Green Blue	Rouge vert bleu	Rood groen blauw	Rot grün blau	Rojo Verde Azul
	R	Red	Rouge	Rood	Rot	Rojo		UWR	Warm white red	Blanc chaud rouge	Warm wit rood	Warm weiss rot	Blanco Cálido Rojo

FIL - KABEL - WIRE - KABEL - CABLE

	White	Blanc	Wit	Weiss	Blanco		Transparent	Transparent	Doorschijnend	Transparent	Transparente
	Black	Noir	Zwart	Schwarz	Negro		Green	Vert	Groen	Grün	Verde

1 inch = 2.54 centimeters

1 feet = 0.3048 meters





SHOWROOM

EN Discover our latest creations and designs in our large and attractive showrooms extended over more than **1500m²**. Our privileged location in Belgium, the heart of Europe, makes our showroom very accessible.

FR Venez découvrir nos dernières créations et conceptions dans nos spacieux et attrayants showrooms qui s'étendent sur plus de **1500m²**. Notre emplacement privilégié en Belgique, au cœur de l'Europe, facilite l'accès à nos showrooms.

NL Ontdek onze laatste designs en ontwerpen in onze grote en aantrekkelijke showrooms van **1500m²**. Onze gunstige ligging in België, het hart van Europa, maakt onze showrooms gemakkelijk te bereiken.

DE Entdecken Sie die neuen Kreationen und Designs in unserem großen und attraktiven Showroom mit über **1500qm** Ausstellungsfläche. Aufgrund unserer günstigen Lage im Herzen von Europa (Belgien), ist unser Showroom leicht zu erreichen.

ES Venga a descubrir nuestras últimas creaciones y diseños en nuestros espaciosos y atractivos showrooms que se extienden sobre más de **1500m²**. Nuestra ubicación privilegiada en el corazón de Europa, en Bélgica, facilita el acceso a nuestros showrooms.

• From Brussels Airport : 🚗 ± 30 minutes

• From Brussels-South Airport : 🚗 ± 20 minutes

• From Brussels-South railway station (TGV-Eurostar) : 🚗 ± 35 minutes

🚆 ± 30 minutes



Tree "Milwaukee"
see page 37



Tree «Luxemburg»
see page 32



Angel "Waterloo"
see page 16



Snowflake "Valby"
see page 56



Chandelier "Brighton"
see page 40



Sparkle "Brighton"
see page 40



Reindeer "Waterloo" 2D
see page 51



Set of 3 stars "Genval"
see page 64



Range "Aberdeen"
see page 52



Arabesque "Brighton"
see page 41



Holly "Munster"
see page 54



Light motif "Monti"
see page 73



Polar bear "Dennis" & "Keith"
see page 106



Xmas bauble "Alexandria"
see page 108



Xmas bauble "Narvik"
see page 109



Xmas bauble "Chiba"
see page 116



Xmas bauble "Colombo"
see page 116



"Rocket Light"
see page 182



"Droplight"
see page 188



"Willow light"
see page 192

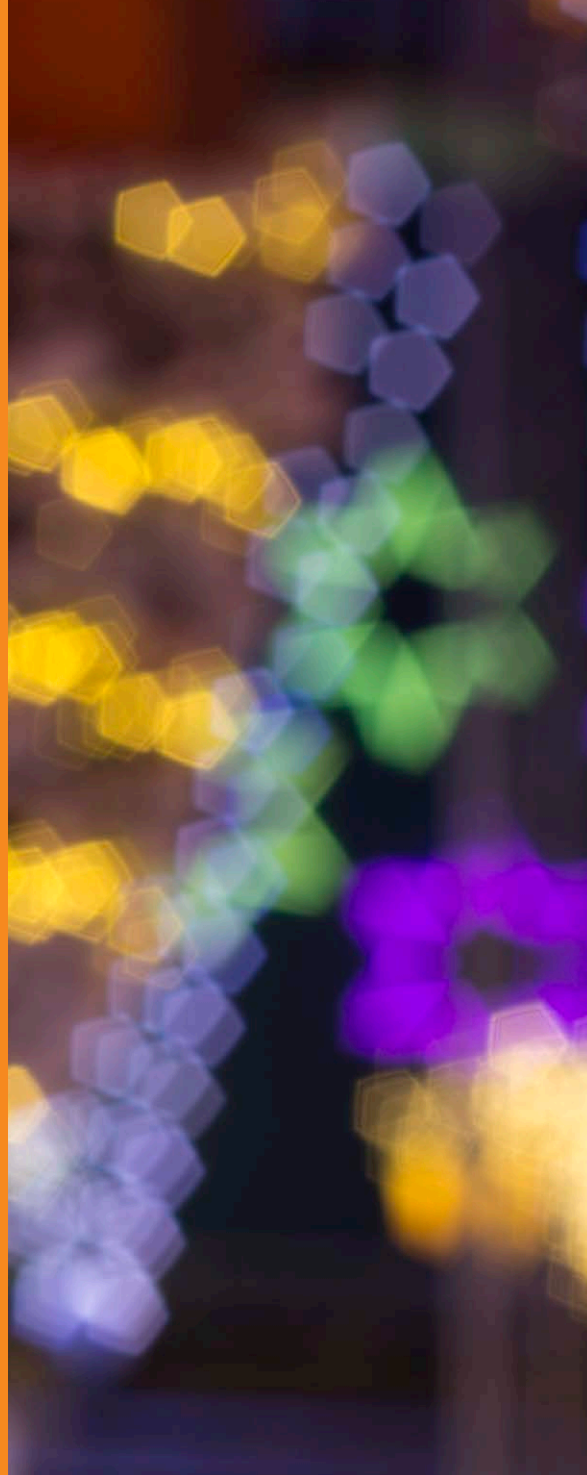


Lightchains "Low-V connect" see page 175-176
Curtain "Low-V connect" see page 177
Accessories "Low-V connect" see page 211

NEW PRODUCTS 2015

- EN** 2015 brings its fair share of new products. Discover the new creations developed by our studio to make your projects unique.
- FR** L'année 2015 apporte son lot de nouveautés. Découvrez nos nouvelles créations développées par notre studio pour rendre vos projets uniques.
- NL** Het jaar 2015 brengt weer veel nieuwe ontwerpen. Ontdek onze nieuwe designs ontwikkeld door onze in-house studio en maak uw projecten uniek.
- DE** Das Jahr 2015 bringt eine Menge an Neuheiten. Schauen Sie gemeinsam mit unserer internen Kreativabteilung auf Ihre Projekte um diese unvergesslich zu machen.
- ES** El año 2015 trae multitud de novedades. Descubra nuestras nuevas creaciones desarrolladas por nuestro estudio para hacer sus proyectos únicos.

100% Globall concept,
100% exclusive.



LIGHT EXCLUSIVES

MAJESTICS

Ghent 19
 Waterloo Angel 16 - 17
 Waterloo Reindeer 14 - 15
 Waterloo Reindeer 21
 Waterloo Ring 12 - 13
 Waterloo Star 10 - 11
 Waterloo Star 20
 Waterloo Tower 18

ILLUMINATED TREES

Auburn 26
 Cleveland 34 - 35
 Cone Tree 33
 Cumberland 39
 Hampton 24
 Hollywood 28 - 29
 Lubeck 25
 Luxemburg 32
 Manhattan 22 - 23
 Milwaukee 36 - 37
 Moscow 30
 St. Petersburg 31
 Tribeca 26 - 27
 Utena 38

ILLUMINATED CHANDELIERS & MOTIVES

Brighton 40 - 41

ILLUMINATED CHANDELIERS & SPHERES

Murcia 44
 Riga 46
 Waterloo Wave 42 - 43
 Zurich 45

ILLUMINATED LIGHTSPRAYS

Calgary 48
 Manhattan 47
 Sevilla 48

ILLUMINATED MOTIVES

Aberdeen 52 - 53
 Aruba 71
 Cannes 71
 Crucero 68
 Fairview 58
 Firenze 80
 Genva 64 - 65
 Gibraltar 67
 Granada 70
 Kensington 76
 Lacombe 63
 Lahti 69
 Madison 59

Mataro 62
 Meknes 70
 Montebello 61
 Monti 73
 Montpellier 60
 Muniani 68
 Munster 54 - 55
 Nottingham 82
 Pamplona 81
 Portobello 76
 Portofino 81
 Regina 74
 Richmond 71
 Riga 79
 Salamanca 83
 Salerno 83
 Siena 60
 Sintra 77
 Thompson 75
 Tipuani 68
 Torino 66
 Torres 70
 Urbino 60
 Valby 56 - 57
 Valparaiso 78
 Victoria 72
 Whitecourt 75
 Wiesbaden 74
 Waterloo 2d Reindeer 51
 Waterloo 2d Ring 50
 Waterloo 2d Star 49



FIBERGLASS

Bradford 100
 Christmas Boot 101
 Christmas Pillar 102
 Clock 101
 Falcon 103
 Gift 91
 Gingerbread House 86
 Kingsley 100
 Mailbox 100
 Melbourne 98
 Parachute 91
 Pisa 103
 Reindeer 96
 Sledge Throne 94
 Teddy 101
 Thrones 92
 Toy Arch 90
 Toybox 88
 Wellington 98
 Yukon 101



INFLATABLES

STUFFED ANIMALS

Bilbor	106 - 107
Dennis & Keith	106 - 107
Irkutsk	106 - 107

XMAS BAUBLES

Alexandria	108 - 109
Antwerp	112 - 113
Chiba	116 - 117
Colombo	116 - 117
Long Beach	115
Nagoya	110 - 111
Nagoya With Light	110 - 111
Narvik	109
Osaka	114
Singapore	114



ANIMATRONICS

The One-Bear Show (ATS001)	120
The Gift Factory (ATS002)	123
The Christmas Village (ATS003)	124
Toyland (ATS004)	127
Singing Bears (ATS005)	128
Happy Penguins (ATS006)	131
The Yeti Mountain (ATS007)	132



SEASONS

Autumn	139
Easter	138
Giant Heart	136
Heart in Sisal	136
Verona	136



DECO ESSENTIALS

CHRISTMAS TREES

Arch Lulea	149
Davos	147
Hampshire	144 - 145
Hemberg	146
Leipzig	148
Sherwood	142 - 143
Stavanger	148

CHRISTMAS GARLANDS & JABOT GARLANDS

Decorated Jabot Garland	154 - 155
Jabot Garland	153
Munchen	150
Munchen Prelit	151
Salzburg	152

CHRISTMAS GARLANDS

Chambord	159
Manhattan	156 - 157
Morzine	158
Murano	158
Westfield	156 - 157

STARS

Christmas Star	163
Rimini	160 - 161
Teresina	162

SNOWFLAKES

Brindisi	164
Sisal	165
Warwick	164

BOWS

Bows	166-167
------	---------

CHRISTMAS BAUBLES

Christmas Baubles	168 - 170
-------------------	-----------

BAUBLE, ROSE & GIFT

Bauble, Rose & Gift	171
---------------------	-----



LIGHT ESSENTIALS

LOW-V CONNECT LIGHTCHAINS

Flash Lightchain	175
Steady Lightchain	175
Twisted Lightchain	176

LOW-V CONNECT CURTAINS

Low-V Curtain	177
---------------	-----

SIMPLY-CONNECT LIGHTCHAINS

Easy Flashlight	181
Easylight	181
Flashlight	180
Flashlight No Powercord	180
G-Light	184
Mikalight	183
Mikalight No Powercord	183
Playlight	179
Playlight No Powercord	179
Rocket Light	182

SIMPLY-CONNECT CURTAINS

Curtain Flash	190
Curtainlight	189
Droplight	188
Icicle	186
Icicle Flash	187
Icicle Flash No Powercord	187
Icicle No Powercord	186

Netlight	185
----------	-----

LIGHTCHAINS

Duralight	196
Garland Belllight	198
Lamps	199 - 200
Playlight 25m	193
Playlight Led Firecracker	195
Treelight	194
Willow Light	192

CURTAINS

Waterfall Curtainlight	197
------------------------	-----

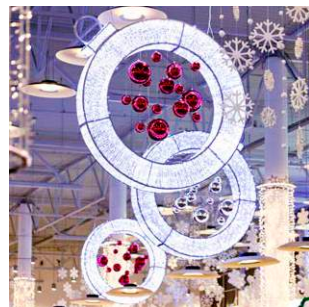
SPHERES

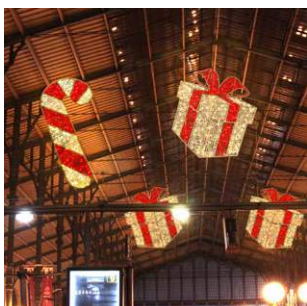
Flash Sphere	202
Foldable Sphere	201
Lightball	203
Playlight Sphere	202



FACILITATORS

Ballast	212
Bracket	214
Low-V connect	211
Rockhampton	207
Simply-connect	208-209-210
Suspension Frame	213
Suspension Tube	206
Universal Modulator	215
Windclips	212
Yelki	207





LIGHT EXCLUSIVES

Create impressive decorations with our exclusive illuminated items : stars, reindeers, trees, chandeliers, motives and many more majestic luminous products 100% Global concept.

2D Reindeer Waterloo	51	Munster	55
2D Ring Waterloo	50	Murcia	44
2D Star Waterloo	49	Nottingham	82
Aberdeen	53	Pamplona	81
Angel Waterloo	17	Portobello	76
Aruba	71	Portofino	81
Auburn	26	Regina	74
Brighton	41	Reindeer Waterloo	14
Calgary	48	Reindeer Waterloo	21
Cannes	71	Richmond	71
Cleveland	34	Riga	46
Cone Tree	33	Riga	79
Crucero	68	Ring Waterloo	12
Cumberland	39	Salamanca	83
Fairview	58	Salerno	83
Firenze	80	Sevilla	48
Genval	65	Siena	60
Ghent	19	Sintra	77
Gibraltar	67	St. Petersburg	31
Granada	70	Star Waterloo	10
Hampton	24	Star Waterloo	20
Hollywood	28	Thompson	75
Kensington	76	Tipuani	68
Lacombe	63	Torino	66
Lahti	69	Torres	70
Lubeck	25	Tower Waterloo	18
Luxemburg	32	Tribeca	26
Madison	59	Urbino	60
Manhattan	22	Utena	38
Manhattan	47	Valby	57
Mataro	62	Valparaiso	78
Meknes	70	Victoria	72
Milwaukee	37	Wave Waterloo	42
Montebello	61	Whitecourt	75
Monti	73	Wiesbaden	74
Montpellier	60	Zurich	45
Moscow	30		
Muniani	68		





WATERLOO STAR

1	LMS081	IN OUT	200x210x25cm	800	☆RFT 10%	24V	48W	
2	LMS084							
3	LMS082	IN OUT	300x310x38cm	1800	☆RFT 10%	24V	108W	
/	LMS085							
4	LMS083	IN OUT	400x415x50cm	3000	☆RFT 10%	24V	185W	
5	LMS086							

My Notes ..Smaller size page 20 .. 2D page 49. Quick installation !

*Standing or hanging,
they are so amazing!*

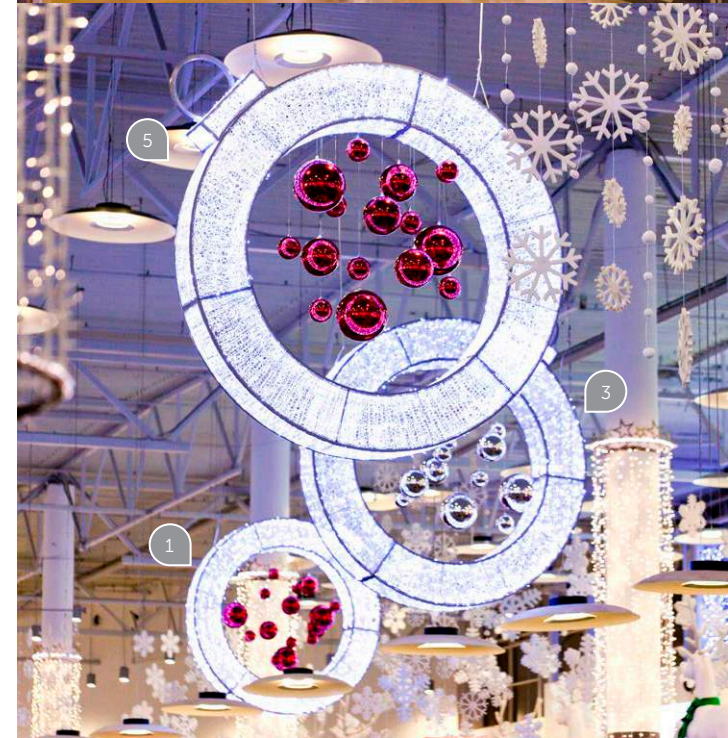




WATERLOO RING

1	LMS132	IN OUT	235x200x30cm	1128	☆RFT 10%	24V	52W	
2	LMS133							
3	LMS134	IN OUT	360x300x45cm	1902	☆RFT 10%	24V	119W	
4	LMS135							
5	LMS136	IN OUT	475x400x60cm	3060	☆RFT 10%	24V	190W	
6	LMS137							

My Notes *2D* page 50



Infinite possibilities



6

2

4



Dekra Lite

WATERLOO REINDEER

1	LMS113	IN OUT	300x160x34cm	1584	RFT 10%	24V	100W	
2	LMS114							
3	LMS115	IN OUT	450x240x45cm	2592	RFT 10%	24V	161W	
/	LMS116							

My Notes *Small sizes page 21*





1

NEW

The Waterloo angel for a traditional Christmas atmosphere...





WATERLOO ANGEL

NEW	1 LMS016	IN OUT	200x200x20cm	827	RFT 11%	24V	50.4W	
------------	----------	-------------------	--------------	-----	------------	-----	-------	--

My Notes

.....



WATERLOO TOWER

1	LMS159	IN OUT	180x60x60cm inner Ø 0.45m	396	★RFT 10%	24V	24W	
2	LMS160							

My Notes *Use half towers for walls or façades*



GHENT

1 XMA297

IN

105x105x12cm

480 

12V

23W

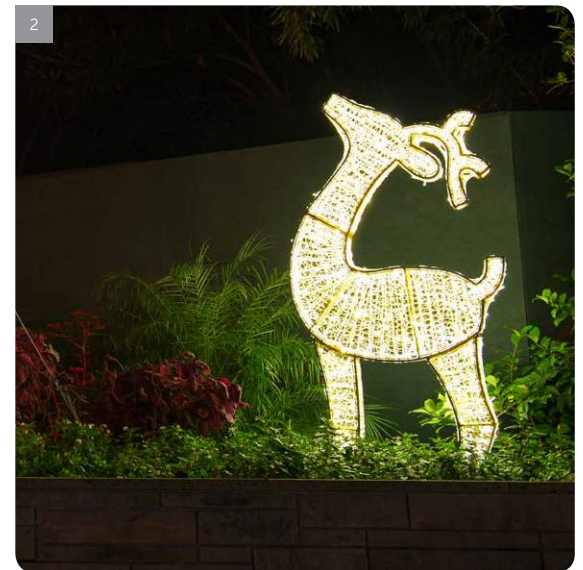
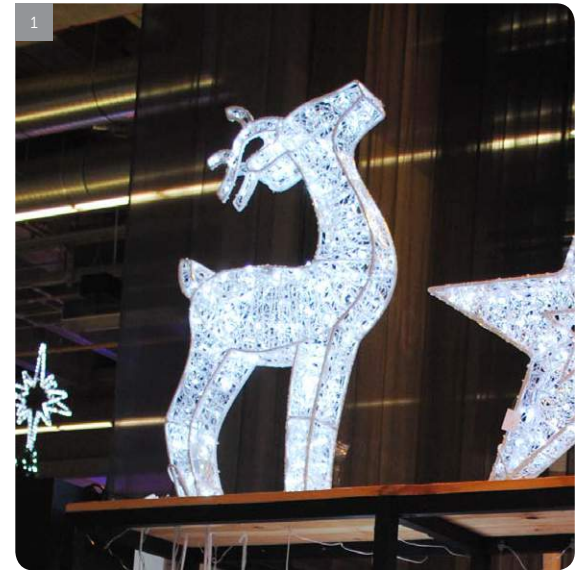




WATERLOO STAR

1	LMS171	IN OUT	100x100x10cm	161	RFT 10%	24V	17W		SILVER STRUCTURE
2	LMS172								GOLD STRUCTURE
3	LMS173	IN OUT	120x120x10cm	224	RFT 10%	24V	24W		SILVER STRUCTURE
4	LMS174								GOLD STRUCTURE

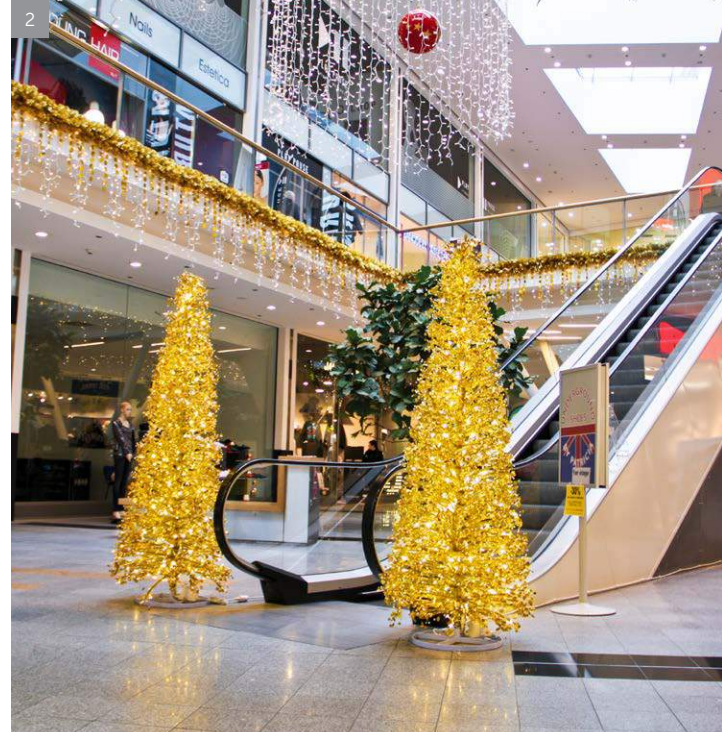
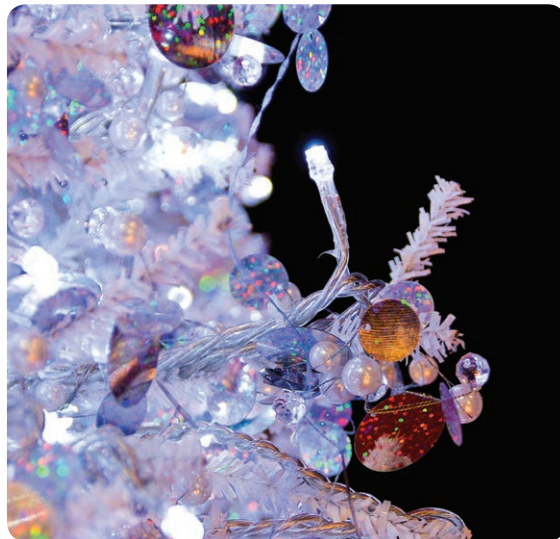
My Notes *Smaller stars, easy to use!*



WATERLOO REINDEER

1	LMS175	IN OUT	120x65x12cm	236	*RFT 10%	24V	26W	
2	LMS176							

LIGHT EXCLUSIVES • ILLUMINATED TREES



MANHATTAN

1	XMA544	IN	2,3m Ø 0.8m	480	RFT 8%	24V	32W	SILVER
2	XMA106		GOLD					
3	XMA435	IN	4,2m Ø 1.4m	6880	RFT 8%	24V	454W	SILVER
4	XMA103		GOLD					
5	XMA436	IN	5,8m Ø 1.9m	12160	RFT 8%	24V	803W	SILVER
/	XMA104		GOLD					
6	XMA437	IN	8m Ø 2.5m	24640	RFT 8%	24V	1626W	SILVER
/	XMA105		GOLD					

My Notes



*Looking for
a bright shiny tree?*

5

3

4





HAMPTON

1	XMA083	IN	2.3m Ø 0.8m	480	★RFT 8%	24V	32W	💡	GOLD AND RED
2	XMA084								GREEN AND RED

My Notes *Already assembled and decorated, time-saver product!*



LUBECK

1	XMA006	IN OUT	6,4m ⌀ 2.1m	2600	24V	353W		GREEN
---	--------	-------------------------	----------------	------	-----	------	--	-------

My Notes *To ease shipment, installation and storage = 1 box on wheels*



TRIBECA

1	XMA001	IN OUT	6,4m ∅ 2.1m	1990	RFT 18%	230V+24V	244W		WHITE & SILVER
---	--------	-------------------------	----------------	------	------------	----------	------	--	----------------

AUBURN

2	XMA002	IN OUT	3m ∅ 0.9m	140		24V	9W		WHITE & SILVER
---	--------	-------------------------	--------------	-----	--	-----	----	--	----------------

My Notes

.....





Lovely spirals!

1



HOLLYWOOD

1	XMA579	IN OUT	6.4m ∅ 2.1m	5030	☆RFT 10%	230V +24V	727W	💡	GREEN
2	XMA558								
/	XMA580	IN OUT	8.5m ∅ 2.8m	7930	☆RFT 10%	230V +24V	1155W	💡	GREEN
/	XMA559								
/	XMA581	IN OUT	10.6m ∅ 3.5m	12395	☆RFT 10%	230V +24V	1820W	💡	GREEN
/	XMA560								

My Notes





2






MOSCOW

1	XMA140	IN OUT	6,4m ∅ 2.1m	10040 ANIMATED	8 PROGRAMS	230V+24V	1495W		WHITE
---	--------	-------------------------	----------------	-------------------	------------	----------	-------	--	-------



ST. PETERSBURG

1	XMA238	IN OUT	3m	990 	230V	152W		WHITE
2	XMA239		6m	2500 	230V	466W		



LUXEMBURG




NEW	1 XMA043	IN OUT	10.5m Ø 3.2m	2600	☆RFT 10%	24V	168W	
	2 XMA086		20m Ø 6.3m	8000	☆RFT 8%		516W	

My Notes 20m tree.....





CONE TREE

1	FOT-LED-CONE-BL-1.8-24V	IN OUT	1.8m ∅ 0.6m	120 	24V	3W	
2	FOT-LED-CONE-BL-2.1-24V		2.1m ∅ 0.69m	144 		4W	



CLEVELAND

1	XMA200	IN	6.5m ∅ 3.65m	13280	RFT 8%	24V	876W		SILVER
2	XMA202								GOLD
/	XMA201	IN	9.6m ∅ 4.9m	27360	RFT 8%	24V	1806W		SILVER
3	XMA203								GOLD





next >

2

COTSWOLD >

dry. >

TOPSHOP

Thompson's

ORITAN

B
BARCLAYS

BARCLAYS
DIAMONDS

PROJECT BY FLYING COLOURS

NEW



*The must-see
Milwaukee tree*

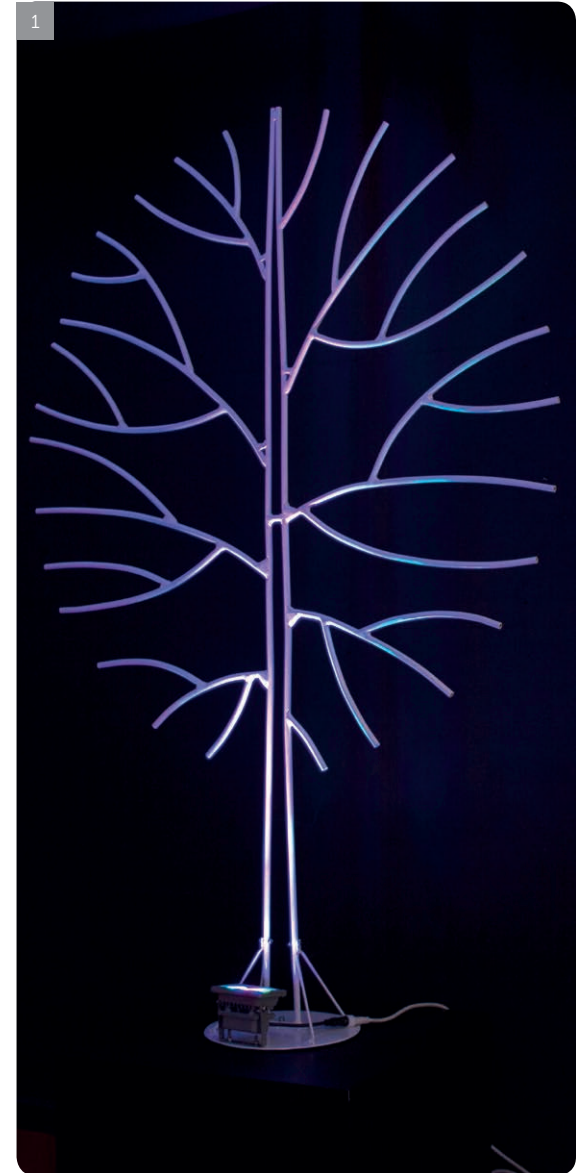




MILWAUKEE

NEW	1	XMA361	IN OUT	8.5m ⌀ 4m	8496	★RFT 10%	24V	453W	
	NEW	2		XMA362	12m ⌀ 5.3m			14428	

My Notes *..Slight trunk doesn't hide windows*



UTENA

1	LMS168		180x128cm	6 	230V	6W	
---	--------	---	-----------	---	------	----	---

My Notes *Window display*



CUMBERLAND

1	XMA586	IN OUT	1.8m Ø 1.4m	672	24V	40W	
/	XMA587						
2	XMA588	IN OUT	2.5m Ø 1.7m	768	24V	46W	
3	XMA589						
/	XMA590	IN OUT	5m Ø 5m	5000	24V	336W	
/	XMA591						
/	XMA592	IN OUT	8m Ø 8m	8600	24V	578W	
/	XMA593						

NEW

Beyond compare, so classy!



4

FREITAG
BIS 24 UHR!

FREITAG
BIS 24 UHR!

Sternenbäck

GLARY WEBER
1. OG

ART DÉCOR

HEER
BÄCKEREI

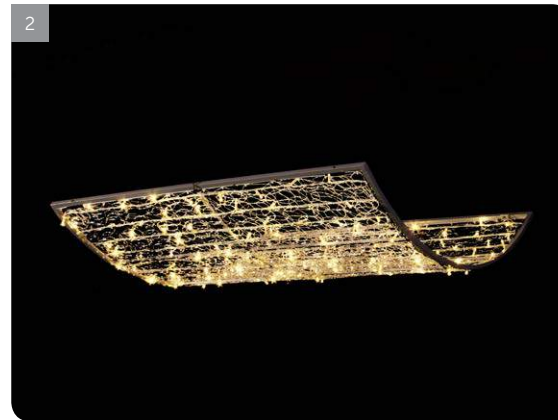
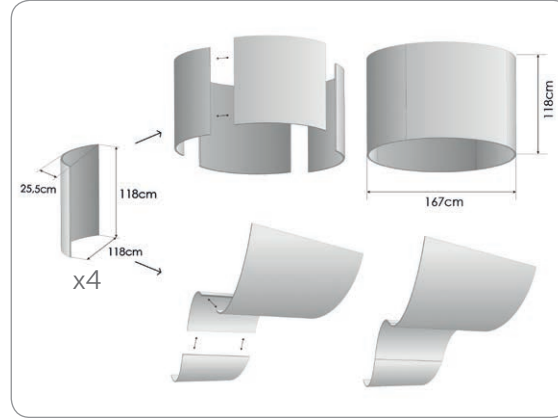


BRIGHTON

NEW	1	LMS178	IN OUT	80cm	30	RFT 20%	24V	2W	low-V connect		SPARKLE
NEW	2	LMS179	IN OUT	120cm	70	RFT 20%	24V	4.3W	low-V connect		SPARKLE
NEW	3	LMS177	IN OUT	220x60cm	70	RFT 20%	24V	4.3W	low-V connect		ARABESQUE
NEW	4	LMS180	IN OUT	350x300x300cm	1611	RFT 11%	24V	105W	/		CHANDELIER

My Notes

LIGHT EXCLUSIVES • ILLUMINATED CHANDELIERS & SPHERES



WAVE WATERLOO

1	LMS165	IN OUT	120x120cm	576	RFET 10%	24V	35W	low-V connect	
2	LMS166								

My Notes *So many applications...*

.....

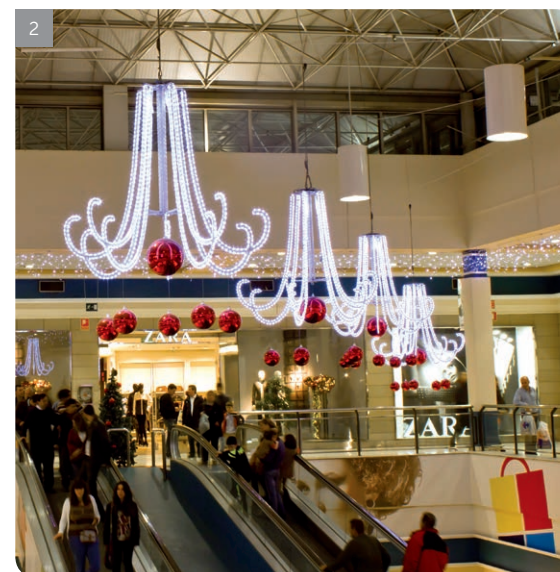
.....











*Let your creativity flow
with modular items*

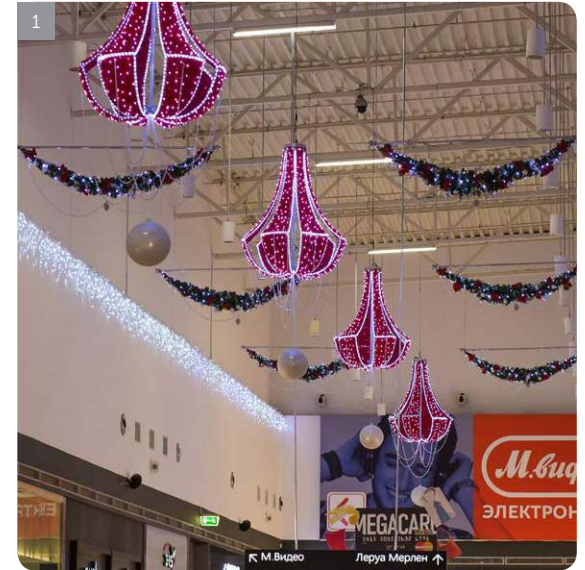
1





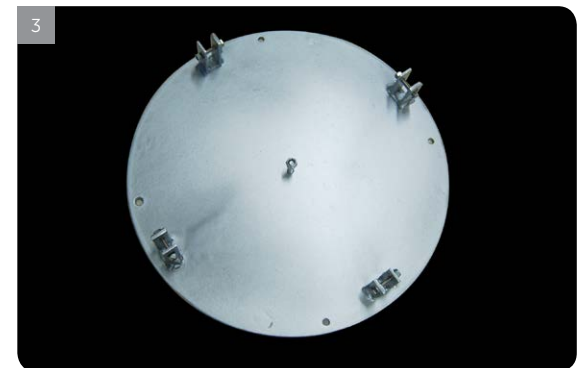
MURCIA

1	LMS096		95x90x90cm	390 	230V	60W	
/	LMS097						
2	LMS076		150x165x165cm	1200 	230V	184W	
/	LMS077						



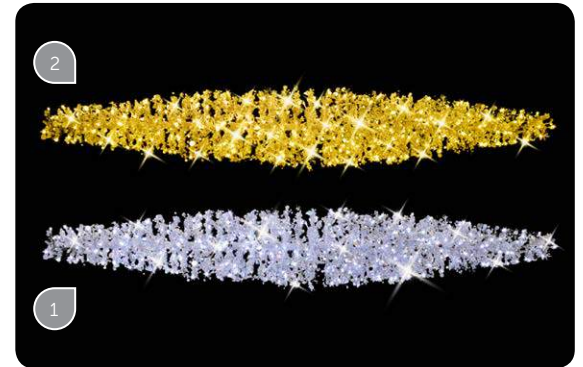
ZURICH

1	LMS029		180x120x120cm	1380	230V	166W	
2	LMS030		100cm	1120	230V	147W	



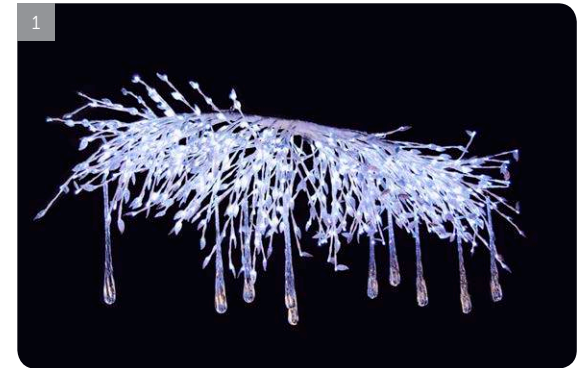
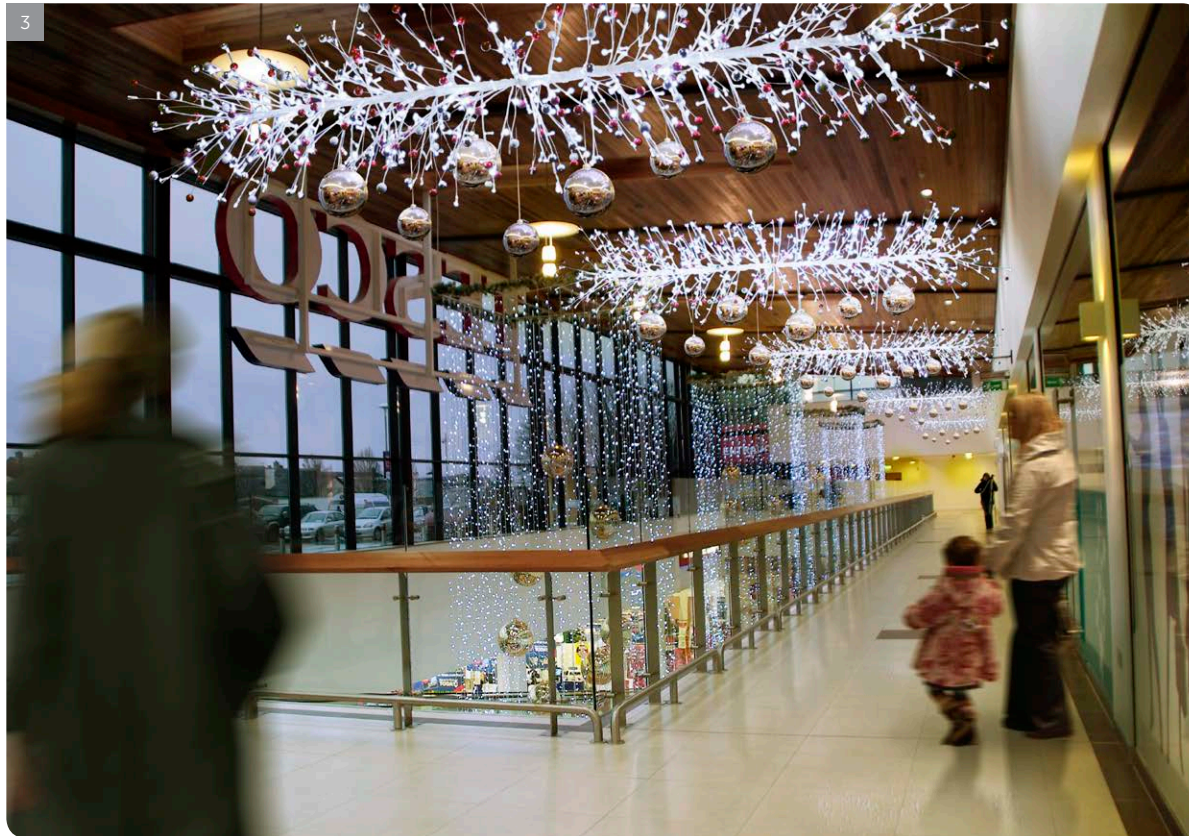
RIGA

1	LMS149		135x135x135cm	696		24V	58W			
2	LMS150									
/	LMS151		180x180x180cm	960		24V	77W			
/	LMS152									
3	LMS027		STAND FOR "RIGA" SPHERE							



MANHATTAN

1	XMA543	IN	2.8m	400	★RFT 10%	230V	37W		SILVER
2	XMA133								GOLD



CALGARY

1	XMA324		2.2m	684	24V	45W	
2	XMA390		0.8m	360	24V	30W	

SEVILLA

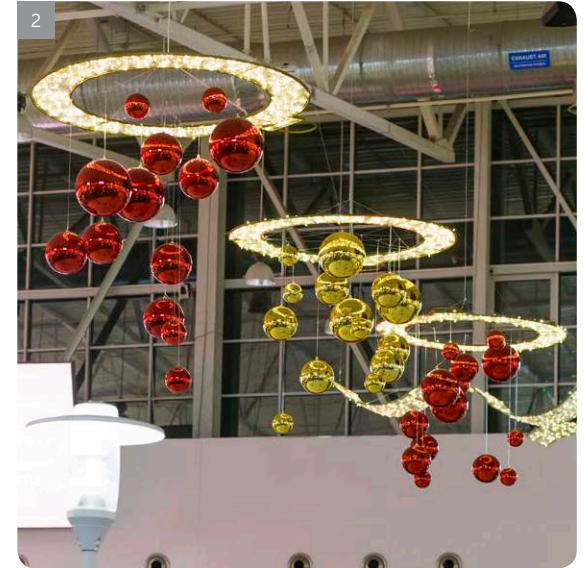
3	XMA004		2.5m	560		24V	44W	
---	--------	--	------	-----	--	-----	-----	--



2D STAR WATERLOO

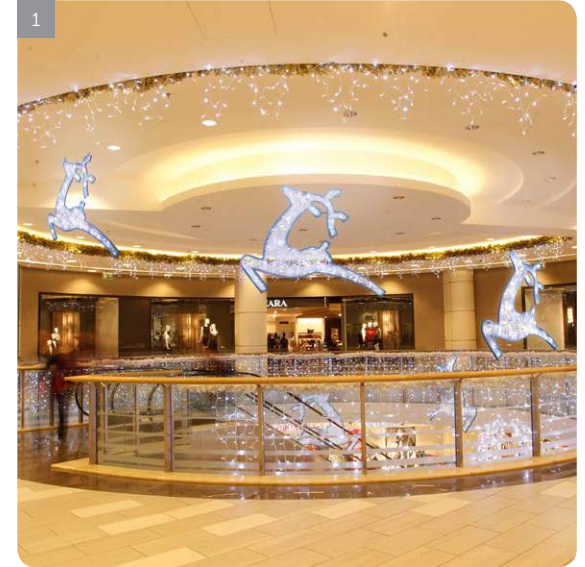
1	LMS155	IN OUT	120cm	144	★RFT 10%	24V	9W	low-V connect	
2	LMS156								
3	LMS157	IN OUT	200cm	256	★RFT 10%	24V	15W	low-V connect	
4	LMS158								
5	LMS010	IN OUT	3D transformation kit for LMS157 and LMS158						

My Notes *Use LMS010 to transform 2D to 3D*



2D RING WATERLOO

/	LMS163		120cm	198	RFT 10%	24V	12W	low-V connect	
1	LMS164								
/	LMS161		230cm	304	RFT 10%	24V	18W	low-V connect	
2	LMS162								



2D REINDEER WATERLOO

NEW	1	LMS169	IN OUT	140x106cm	90	★RFT 11%	24V	5.8W	low-V connect
NEW	2	LMS170							

NEW



The brand new Aberdeen motives...



ABERDEEN

NEW	/	LMS181	IN	120x100cm	200	*RFT 20%	24V	12.5W	low-V connect		BAUBLE
NEW	1	LMS187	OUT	190x155cm	300			19.2W			
NEW	/	LMS182	IN	125x95cm	170	*RFT 20%	24V	11W	low-V connect		BAUBLE
NEW	2	LMS188	OUT	195x150cm	250			14.9W			
NEW	/	LMS183	IN	170x60cm	155	*RFT 20%	24V	14.9W	low-V connect		BAUBLE
NEW	3	LMS189	OUT	290x100cm	260			16.3W			
NEW	/	LMS184	IN	155x115cm	170	*RFT 20%	24V	10.5W	low-V connect		BOW
NEW	4	LMS190	OUT	195x150cm	220			13.4W			
NEW	5	LMS185	IN	150x70cm	140	*RFT 20%	24V	8.6W	low-V connect		CANDY STICK
NEW	6	LMS191	OUT	215x100cm	200			13W			
NEW	7	LMS186	IN	120x120cm	160	*RFT 20%	24V	9.6W	low-V connect		GIFTBOX
NEW	/	LMS192	OUT	180x180cm	360			21.6W			

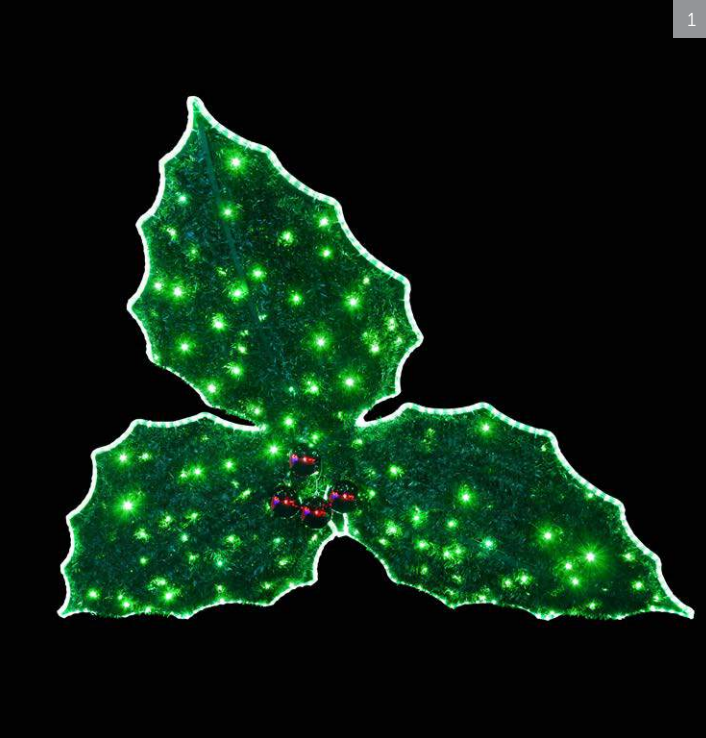
My Notes *Creative and beautiful range, traditional colours*

NEW

*Get under
the mistletoe...*

1





MUNSTER - baubles not included

NEW	1 LMS067	IN OUT	205x183cm	480	RFT 10%	230V	69W	
------------	----------	-------------------	-----------	-----	------------	------	-----	--

My Notes *Ideal for low corridors!*

NEW

1

Let it snow!

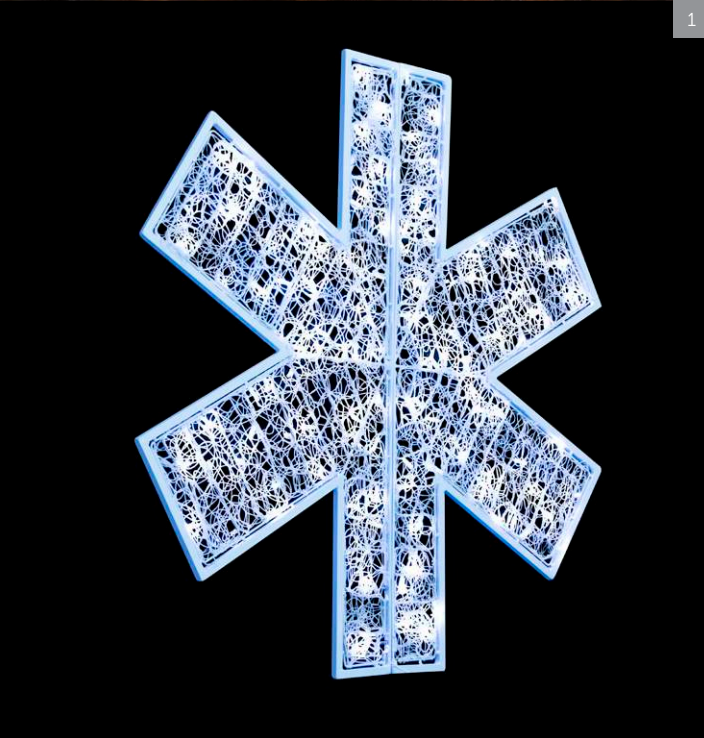




1



1



1

VALBY

NEW	/	LMS018	IN OUT	120x120cm	126	RFT 10%	24V	7.7W	low-V connect	
NEW	1	LMS019	IN OUT	180x180cm	306	RFT 10%	24V	19.2W	low-V connect	

My Notes *Packed by 2, 3D kit included*

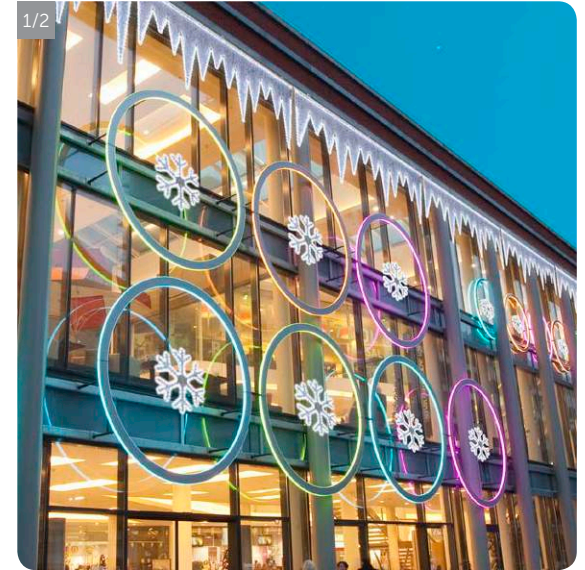


FAIRVIEW

1	LMS040	IN OUT	60x60cm	90	230V	14W		simply connect		WHITE
2	LMS041									GOLD
3	LMS042	IN OUT	80x80cm	120	230V	18W		simply connect		WHITE
4	LMS043									GOLD

My Notes *Ideal for city projects. Can be used for trees, spans, façades...*





MADISON

1	LMS046	IN OUT	63x63cm	180	230V	28W		simply connect	
2	LMS047		83x83cm	210		32W			

My Notes *Connect with facilitators page 208-209*



MONTPELLIER

1	LMS073		75x170cm	318	RFT 2%	230V	51W		RED
---	--------	--	----------	-----	-----------	------	-----	--	-----

URBINO

2	LMS066		76x275cm	300		230V	46W		RED & WHITE
---	--------	--	----------	-----	--	------	-----	--	-------------

SIENA

3	LMS068		68x206cm	270		230V	42W		RED & WHITE
---	--------	--	----------	-----	--	------	-----	--	-------------



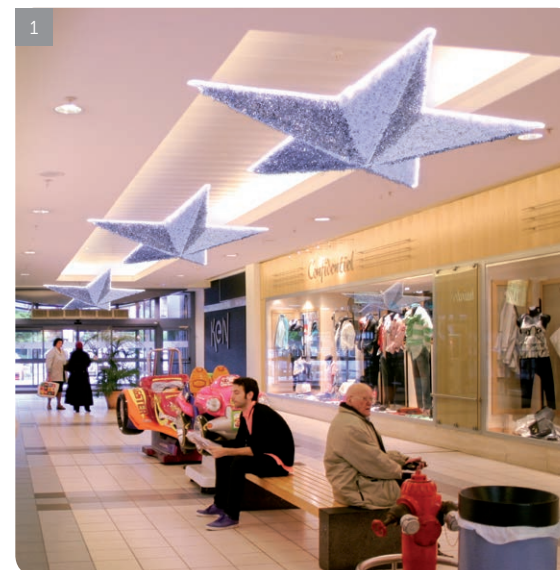


Congo-Bleu pour les SIL



MONTEBELLO

1	LMS128	IN OUT	205x123cm	330 	230V	46W	 NO POWERCORD	simply connect	
2	LMS129		254x80cm	240 		37W			



MATARO

1	LMS130	IN OUT	183x174x22cm	210	230V	32W			WHITE & SILVER
2	LMS131								



LACOMBE

1 LMS044



90x32cm

60

230V

9W



simply connect



NEW

2

Shiny Genvall stars...





1



2



2

GENVAL

NEW	1	LMS004	IN OUT	140, 185 & 230cm	180 	☆RFT 20%	24V	17.3W	
	NEW	2							LMS008

My Notes

.....



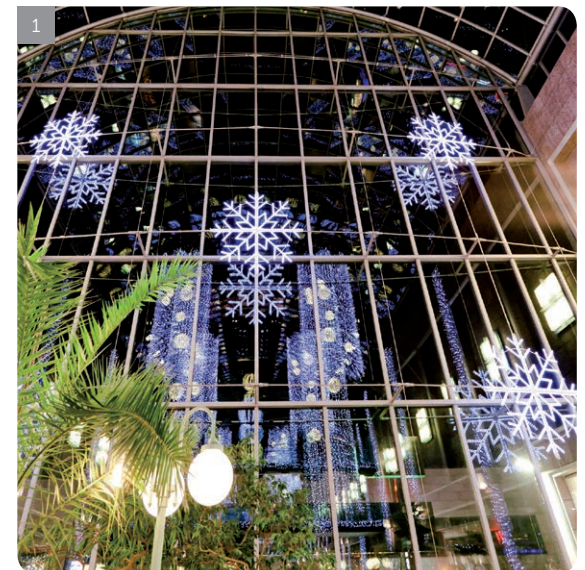
TORINO

1 XMA322		50cm	200	230V	7W		
----------	--	------	-----	------	----	--	--

My Notes *Light moves → eye-catching shooting stars*



KG NAGOYA VERSA WALK NISHIO



GIBRALTAR

1 LMS121



210x210cm

1080

230V

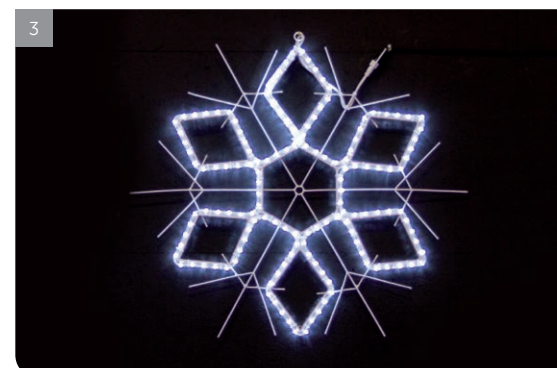
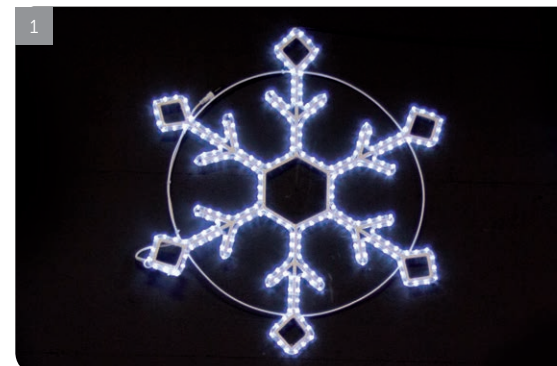
166W



simply connect



My Notes ...Comes in 4 parts... 3D fixation included.....



TIPUANI

1	LMS122	IN OUT	105x91cm	240	230V	37W		simply connect	
2	LMS123		80x68cm	210		32W			

CRUCERO

3	LMS144	IN OUT	85x99cm	150	230V	23W		simply connect	
---	--------	-----------	---------	-----	------	-----	--	-------------------	--

MUNIANI

4	LMS145	IN OUT	94x80cm	150	230V	23W		simply connect	
---	--------	-----------	---------	-----	------	-----	--	-------------------	--



LAHTI - ballast (XMA534) not included

1	XMA025	IN OUT	120x120x80cm	258	★RFT 20%	24V	17W	
/	XMA026							

My Notes *Use ballast, see page 212*



GRANADA

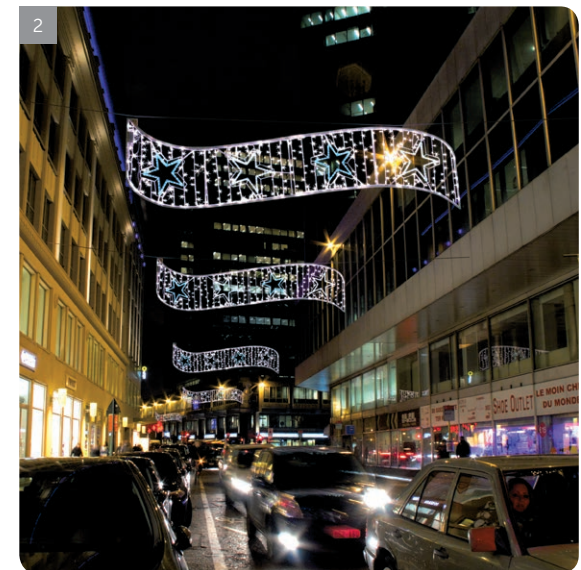
1	LMS105		430x72cm	718	230V	102W	
---	--------	--	----------	-----	------	------	--

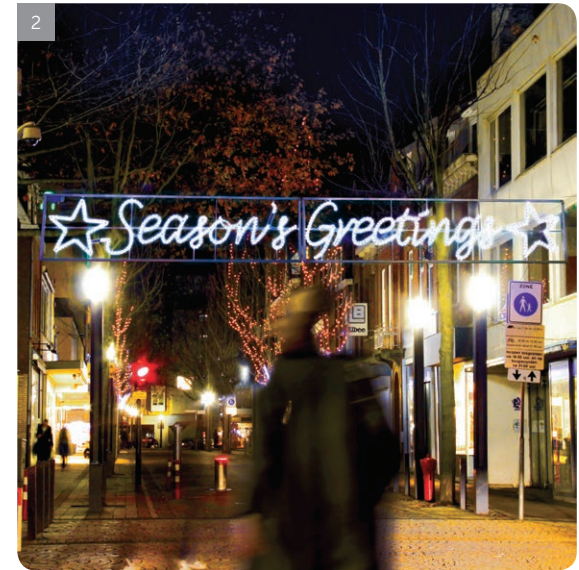
TORRES

2	LMS112		400x110cm	540 ANIMATED	230V	55W	+
---	--------	--	-----------	---------------	------	-----	---

MEKNES

3	LMS054		450x92cm	1020	230V	156W	
---	--------	--	----------	------	------	------	--





CANNES

1	LMS005		550x70cm	1050	230V	161W	
---	--------	--	----------	------	------	------	--

RICHMOND

2	LMS078		550x70cm	1230	230V	184W	
---	--------	--	----------	------	------	------	--

ARUBA

3	LMS028		550x70cm	1110	230V	170W	
---	--------	--	----------	------	------	------	--



VICTORIA

1 LMS015



350x108cm

1050 

230V

161W

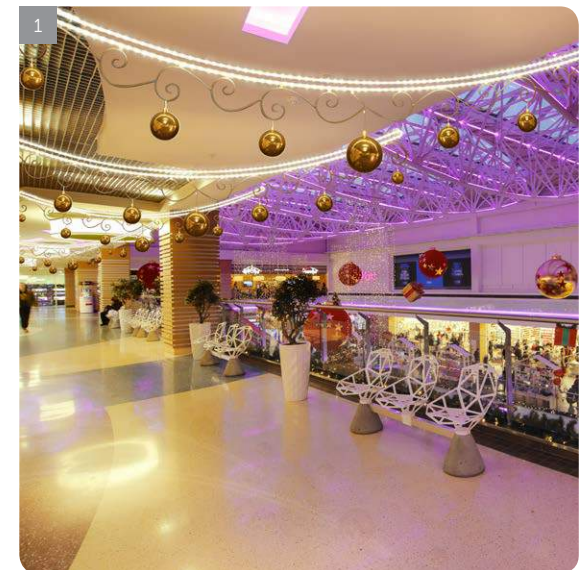
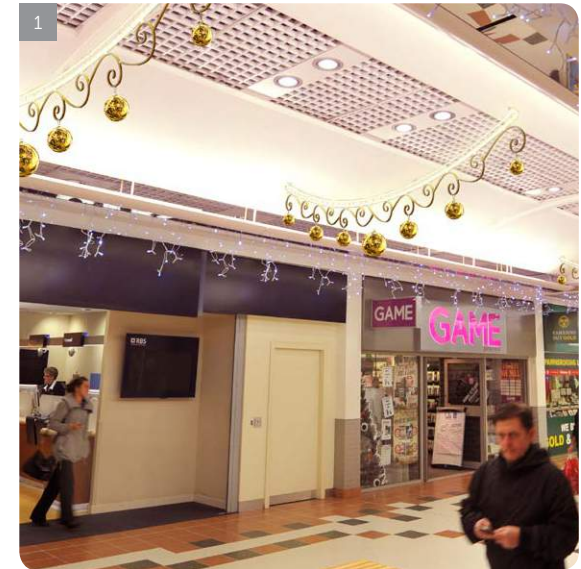




MONTI - baubles not included

NEW	1 LMS034		290x45cm	180	230V	27.6W	
------------	----------	--	----------	-----	------	-------	--

My Notes *Nice idea for low corridors*





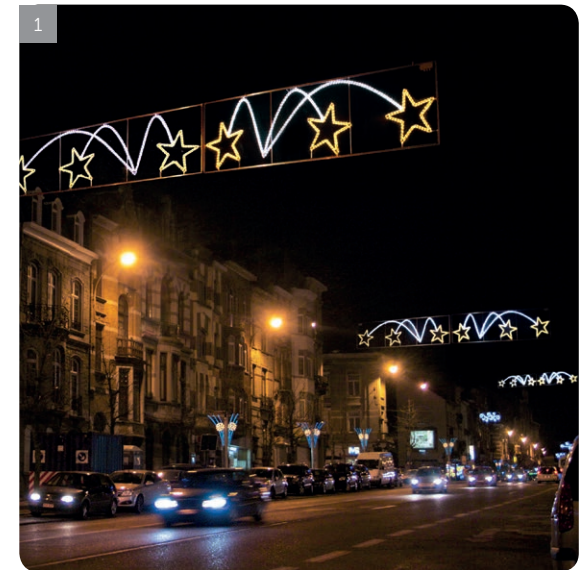
WIESBADEN

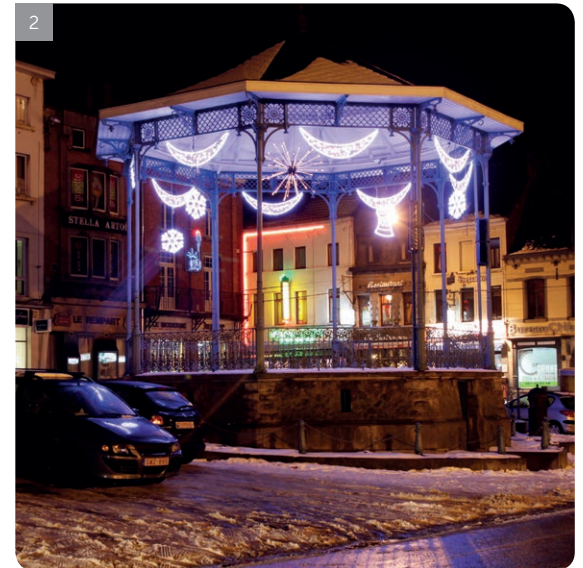
1	LMS049		310x90cm	660	230V	101W	+
---	--------	--	----------	-----	------	------	---

REGINA

2	LMS036		170x63cm	240	230V	37W		simply connect	CONNECT MAX 6	
/	LMS037									

My Notes *Combine Regina with Lacombe page 63*





WHITECOURT

1	LMS038		190x82cm	330	230V	51W		simply connect	CONNECT MAX 4	
---	--------	--	----------	-----	------	-----	--	----------------	---------------	--

THOMPSON

2	LMS039		168x65cm	200	RFT 40%	230V	23W		simply connect	CONNECT MAX 12	
---	--------	--	----------	-----	---------	------	-----	--	----------------	----------------	--

My Notes *See Madison page 59*



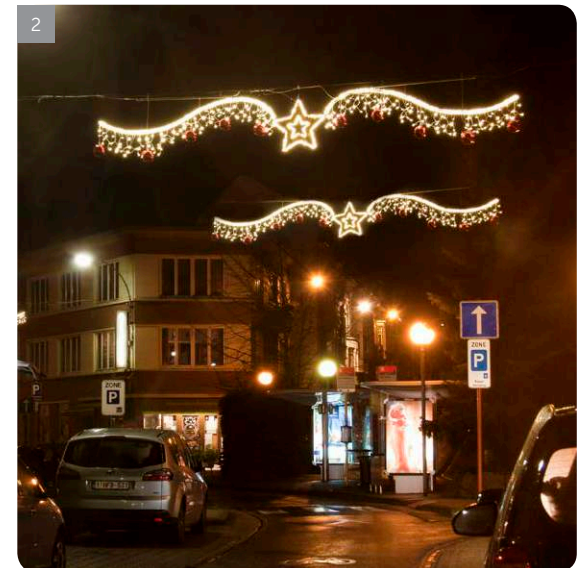
PORTOBELLO

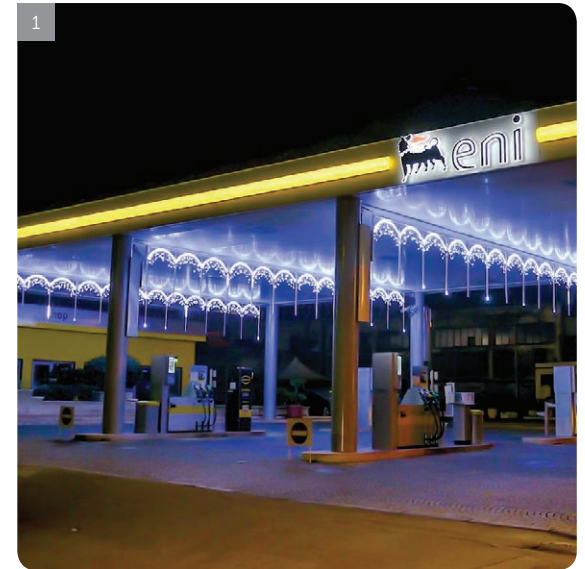
1	LMS094	IN OUT	283x80cm	300	230V	41W	simply connect	
2	LMS095							

KENSINGTON

3	LMS079	IN OUT	307x66cm	300	230V	41W	simply connect	
/	LMS080							

My Notes ..Connector.Simply-connect in the middle of the Kensington.....







SINTRA

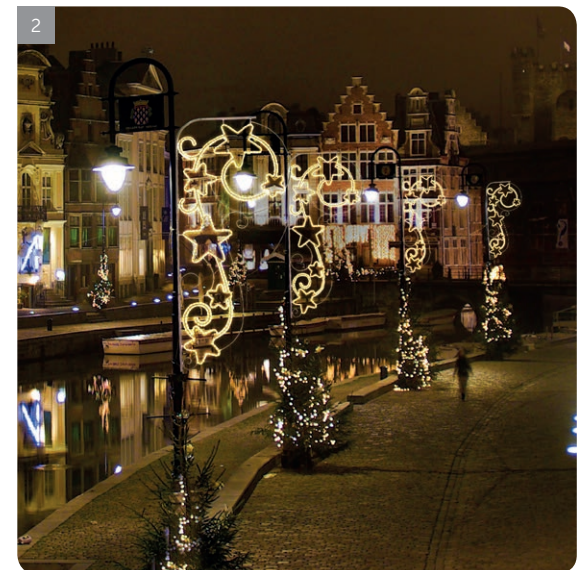
1	LMS107	IN OUT	288x60cm	309	230V	41W	NO POWERCORD	simply connect	CONNECT MAX 5	
2	LMS108									

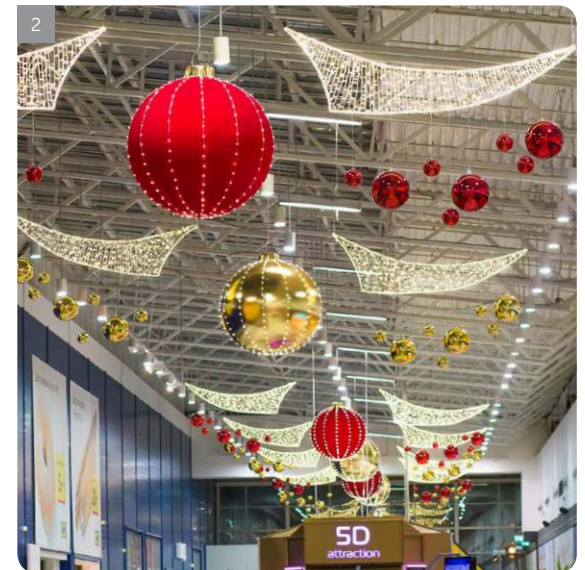


VALPARAISO

1	LMS092	IN OUT	265x120cm	510 	230V	78W	simply connect	
2	LMS093							
3	LMS146	IN OUT	FASTENING SYSTEM					

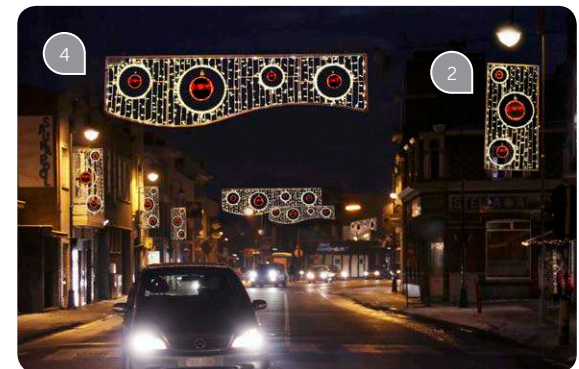
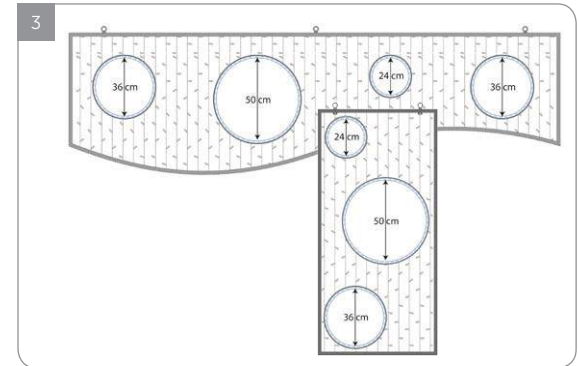
My Notes ..Modular range .: motives or chandelier ..= smart fastening system .±. 6 motives.....





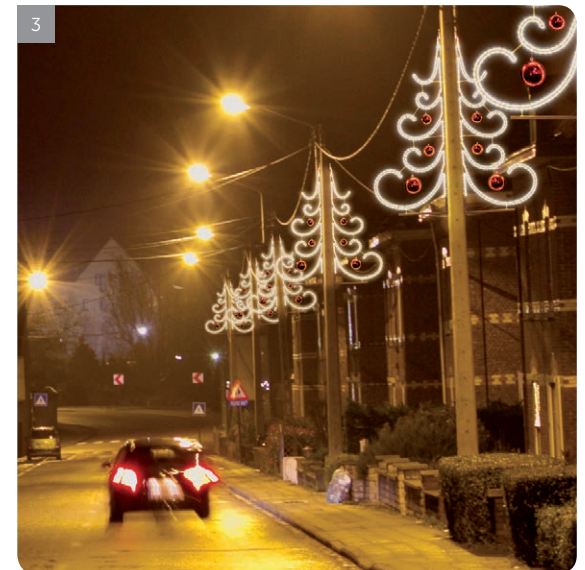
RIGA

1	LMS045	IN OUT	300x85cm	522	RFT 10%	230V	51W	simply connect	CONNECT MAX 4	
2	LMS098									



FIRENZE - baubles not included

1	LMS064	IN OUT	142x70cm	276	230V	28W	simply connect	
2	LMS065							
3	LMS062	IN OUT	280x80cm	525	230V	55W	simply connect	
4	LMS063							

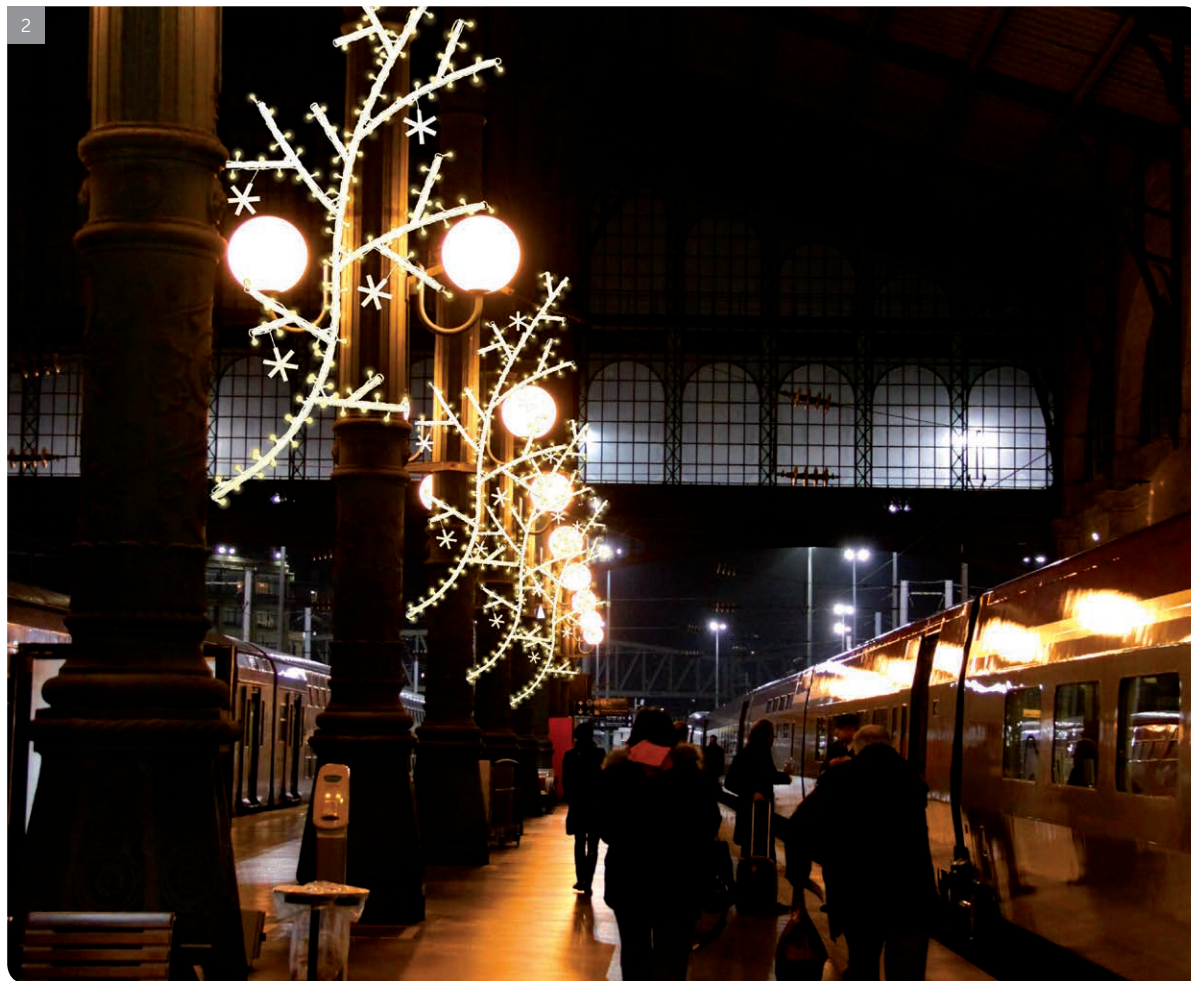


PAMPLONA

1	LMS100	IN OUT	185x100cm	300	230V	46W		simply connect	CONNECT MAX 5	
2	LMS101									

PORTOFINO - baubles not included

3	LMS109	IN OUT	77x195cm	300	230V	46W		simply connect	
---	--------	-----------	----------	-----	------	-----	--	-------------------	--



NOTTINGHAM

1	LMS087	IN OUT	115x280cm	180 	230V	14W		
2	LMS088							



SALAMANCA

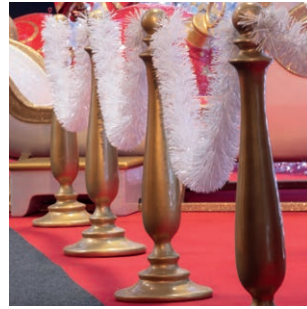
1	LMS148		112x70cm	240	230V	37W		
---	--------	--	----------	-----	------	-----	--	--

SALERNO - baubles not included

2	LMS147		120x95cm	180	230V	28W		
---	--------	--	----------	-----	------	-----	--	--

My Notes *..Easy to adapt to customer's style or character*





FIBERGLASS

More than decorations, it's a universe !
 These exclusive products designed by
 Globall concept will invite you into
 the true magic of Christmas



Bradford	100
Christmas Boot	101
Christmas Pillar	102
Clock	101
Falcon	103
Gift	91
Gingerbread House	86
Kingsley	100
Mailbox	100
Melbourne	98
Parachute	91
Pisa	103
Reindeer	96
Sledge Throne	94
Teddy	101
Thrones	92
Toy Arch	90
Toybox	88
Wellington	98
Yukon	101



GINGERBREAD HOUSE

1	XMA302	<input type="checkbox"/> IN <input type="checkbox"/> OUT	430x295x470cm	HOUSE
2	XMA394	<input type="checkbox"/> IN <input type="checkbox"/> OUT	50x50x45cm	NIC NAC BLUE
3	XMA428			NIC NAC YELLOW
4	XMA056			NIC NAC - YELLOW
5	XMA057	<input type="checkbox"/> IN <input type="checkbox"/> OUT	19x18x19cm	NIC NAC - PINK
6	XMA395	<input type="checkbox"/> IN	20x8x3cm (5 pcs)	CANDIES
7	XMA033	<input type="checkbox"/> IN <input type="checkbox"/> OUT	32x30x30cm	CREAM PUFF
8	XMA073	<input type="checkbox"/> IN <input type="checkbox"/> OUT	55x25x8cm	LOLLIPOP
9	XMA662	<input type="checkbox"/> IN <input type="checkbox"/> OUT	55x25x9cm	CANDY STICK - PINK
10	XMA393	<input type="checkbox"/> IN <input type="checkbox"/> OUT	120x40x15cm	CANDY STICK - PINK
11	XMA220	<input type="checkbox"/> IN <input type="checkbox"/> OUT	30x26x4cm	GINGERBREAD MAN
12	XMA221	<input type="checkbox"/> IN <input type="checkbox"/> OUT	30x26x4cm	GINGERBREAD TREE
/	XMA223	<input type="checkbox"/> IN <input type="checkbox"/> OUT	26x25x4cm	GINGERBREAD HEART



My Notes

The best way to attract children... and parents !



3

2

1

10



TOYBOX

1	XMA065	<input type="checkbox"/> IN	350x295x350cm	TOYBOX
2	XMA011	<input type="checkbox"/> IN <input type="checkbox"/> OUT	65x30x30cm	GUITAR PLAYER
3	XMA013	<input type="checkbox"/> IN <input type="checkbox"/> OUT	47x24x24cm	MARACAS PLAYER
4	XMA017	<input type="checkbox"/> IN <input type="checkbox"/> OUT	115x56x29cm	STICK HORSE
5	XMA028	<input type="checkbox"/> IN <input type="checkbox"/> OUT	87x25x25cm	MARACAS
6	XMA030	<input type="checkbox"/> IN <input type="checkbox"/> OUT	40x40x31cm	DUCK
7	XMA075	<input type="checkbox"/> IN <input type="checkbox"/> OUT	23x23x23cm	DICE

My Notes *Also fantastic with huge teddy bear, see page 106*







TOY ARCH

1	XMA539	IN	350x185x350cm	TOY ARCH
2	XMA047	IN OUT	65x50x25cm	REINDEER
3	XMA051	IN OUT	45x45x30cm	LOCO



GIFT

1 XMA005	IN OUT	55x55x63cm	RED & GREEN
2 XMA029			GOLD & RED

PARACHUTE

3 XMA044	IN OUT	100x100x30cm
----------	-----------	--------------

My Notes



THRONES

1	XMA015	IN	125x82x209cm	THRONE RED & GOLD
2	XMA287	IN	42x42x40cm	CHRISTMAS STOOL
3	XMA183	IN	163x90x140cm	THRONE
4	XMA540	IN	145x85x100cm	TOY THRONE
5	XMA303	IN	180x100x67cm	GINGERBREAD THRONE
6	XMA012	IN	110x68x150cm	THRONE RED & GOLD
7	XMA008	IN	64x60x118cm	THRONE RED & GOLD



Perfect for the event...



2



2



SLEDGE THRONE

1 XMA018

IN

180x125x144cm

2 XMA545

IN

310x150x160cm

My Notes *All the cushions are included !*



1

*Santa's most comfortable
sledge to deliver gifts all
around the world*



REINDEER

1	XMA569	IN OUT	100x50x240cm	STANDING
2	XMA570	IN OUT	190x50x178cm	FLYING
3	XMA020	IN	143x57x104cm	FLYING
/	XMA245	IN	238x117x108cm	STANDING GOLD
4	XMA247			STANDING SILVER
5	XMA246	IN	164x163x108cm	SITTING GOLD
6	XMA248			SITTING SILVER



3

*Santa's fellow
travellers*



WELLINGTON

1	XMA530	IN OUT	55x50x50cm	BLUE & SILVER
2	XMA541			RED & GOLD
3	XMA609			PEARL & GOLD

MELBOURNE

4	XMA264	IN OUT	110x80x80cm	BLUE & SILVER
5	XMA326			RED & GOLD
6	XMA597			PEARL & GOLD



3

*Beautiful fiberglass
XMAS baubles*



KINGSLEY

1	XMA136	IN OUT	145x74x69cm
---	--------	-------------------	-------------

BRADFORD

2	XMA014	IN	120x54x54cm
---	--------	-----------	-------------

MAILBOX

3	XMA180	IN OUT	168x65x65cm
---	--------	-------------------	-------------

My Notes *Great to announce the coming of Santa*



CLOCK

1	XMA195	IN OUT	170x43x25cm
---	--------	-----------	-------------



CHRISTMAS BOOT

2	XMA286	IN OUT	100x100x40cm
---	--------	-----------	--------------



YUKON

3	XMA134	IN OUT	185x108x108cm
---	--------	-----------	---------------

TEDDY

42	XMA049	IN OUT	80x60x55cm
----	--------	-----------	------------





CHRISTMAS PILLAR

1 XMA546 (2pcs)

IN

75cm

My Notes *..Not just for Christmas, can be used for other decorations as well.*





FALCON

1 XMA125

IN
OUT

212x58x58cm



PISA

2 XMA181

IN
OUT

180x45x45cm



INFLATABLES





INFLATABLES

Our standing and hanging inflatable items are really eye-catching. From huge animals to Christmas baubles, enjoy Christmas on a large scale !

Alexandria	109
Antwerp	112
Bilbor	106
Chiba	116
Colombo	116
Dennis & Keith	106
Irkutsk	106
Long Beach	115
Nagoya	110
Nagoya with Light	110
Narvik	109
Osaka	114
Singapore	114

INFLATABLES • STUFFED ANIMALS



BILBOR

/	XMA328	IN	200x200x200cm	230V	330W
1	XMA271	IN	300x300x300cm	230V	330W

IRKUTSK

2	XMA270	IN	300x225x215cm	230V	125W
---	--------	----	---------------	------	------

DENNIS & KEITH

NEW	3	XMA042	IN	200x250x120cm	230V	330W
NEW	4	XMA041	IN	300x400x200cm	230V	330W

My Notes ..Definitely cute and attractive.♥ Endearing polar bears.. Great to fill big spaces.....





Look how cute they are !

NEW

1

Winter Wonderland





ALEXANDRIA

NEW	1 XMA157	IN	160x150x150cm	230V	55W	WHITE
NEW	2 XMA158					RED

NARVIK



NEW	3 XMA185	IN	160x150x150cm	230V	55W	BLUE & WHITE
NEW	4 XMA186					RED & WHITE



NAGOYA

1	XMA547	IN	160x150x150cm	230V	55W	GOLD
/	XMA412					RED
/	XMA548					SILVER
/	XMA323	IN	250x230x230cm	230V	55W	GOLD
/	XMA325					RED
2	XMA327					SILVER

NAGOYA WITH LIGHT

3	XMA575	IN	160x150x150cm	290 	/	230V	55W	GOLD
4	XMA576				/			RED
5	XMA577				★RFT 50%			SILVER
/	XMA126	IN	250x230x230cm	500 	/	230V	55W	GOLD
/	XMA127				/			RED
/	XMA128				★RFT 50%			SILVER

2



5





3

4

1

*Easy to place
and to store*



ANTWERP

/	XMA251					GOLD, RED & GREEN
1	XMA208					GOLD & RED
2	XMA222	IN	160x150x150cm	230V	55W	RED & GOLD
3	XMA225					RED, DARK RED & GOLD
4	XMA227					RED, GREEN & GOLD
5	XMA608					GOLD, RED & GREEN
6	XMA229					GOLD & RED
/	XMA655	IN	250x230x230cm	230V	55W	RED & GOLD
7	XMA252					RED, DARK RED & GOLD
/	XMA258					RED, GREEN & GOLD

My Notes

.....





4

2

3

*Colourful and luxurious
XMAS baubles*



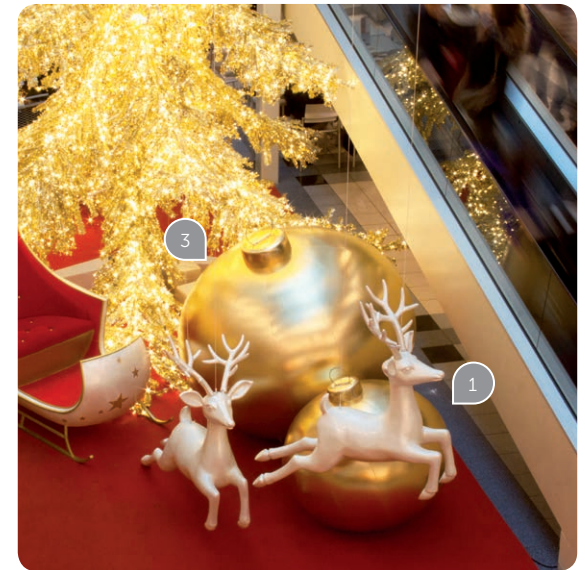
SINGAPORE

1	XMA308	IN	160x150x150cm	230V	55W	RED & GOLD
2	XMA312					GOLD & RED
/	XMA280	IN	250x230x230cm	230V	55W	RED & GOLD
/	XMA281					GOLD & RED

OSAKA

3	XMA282	IN	160x150x150cm	230V	55W	GOLD
4	XMA284					RED
/	XMA283	IN	250x230x230cm	230V	55W	GOLD
/	XMA285					RED





LONG BEACH

1	XMA293	IN	110x110x110cm	230V	55W	GOLD
2	XMA295					SILVER
3	XMA294	IN	170x170x170cm	230V	55W	GOLD
4	XMA296					SILVER

INFLATABLES • XMAS BAUBLES



CHIBA

NEW	/ XMA357	IN	200x170x170cm	230V	55W	RED, DARK RED & GOLD
NEW	1 XMA358					GOLD & RED
NEW	2 XMA359					GOLD & WHITE
NEW	3 XMA360					RED & GOLD

COLOMBO

	4 XMA332	IN	300x160x160cm	230V	55W	RED, DARK RED & GOLD
	5 XMA334					GOLD & RED
NEW	6 XMA335					GOLD & WHITE
NEW	/ XMA336					RED & GOLD



NEW

*Impressive
Colombo
baubles...*



2

6





ANIMATRONICS

Animals and automatons interacting in a fabulous decor ! Wonderful shows that will attract everybody's attention.



The One-Bear Show (ATS001)	120
The Gift Factory (ATS002)	123
The Christmas Village (ATS003)	124
Toyland (ATS004)	127
Singing Bears (ATS005)	128
Happy Penguins (ATS006)	131
The Yeti Mountain (ATS007)	132



A show that's both funny
and educational

1. THE ONE-BEAR SHOW (ATS001)

A funny and friendly teddy bear greets and tells a couple of jokes to the public. The funniest moment is when the teddy bear reads a letter to Santa written by a boy who asked for a lot of Christmas presents and who gets disappointed and even

angry with Santa because he didn't get what he asked for. The content of the letter is very amusing and full of childish jokes. The bear tells a few positive wishes and starts singing. After the songs, it says goodbye and announces the next show.

Complete the scene with trees, presents and any other decorative items from our catalogue!



CHARACTERS AND THEIR MOVEMENTS

- One sitting bear of 110cm, it talks, its mouth and waist move
- Two small plush bears of 40cm, they swing

DECORATION OF THE SCENE

- Wooden present box of 80x60x50cm
- Small Christmas decoration items: teddy bears, Santa's socks, golden bags and other small Christmas ornaments
- Green grass made of material
- Artificial snow
- Wooden floor and fences

SIZE OF THE TOTAL SCENE

- 3.7x3.7m / 13,7m²

SOUND SUPPORT

- One control box
- Sound equipment with two different programs

LANGUAGES AVAILABLE

- All EU languages, RU

DURATION OF THE SHOW

- Approx. 7-8 min, it includes a dialogue, two Christmas songs and a closing dialogue



Laughing is the best medicine to cheer up



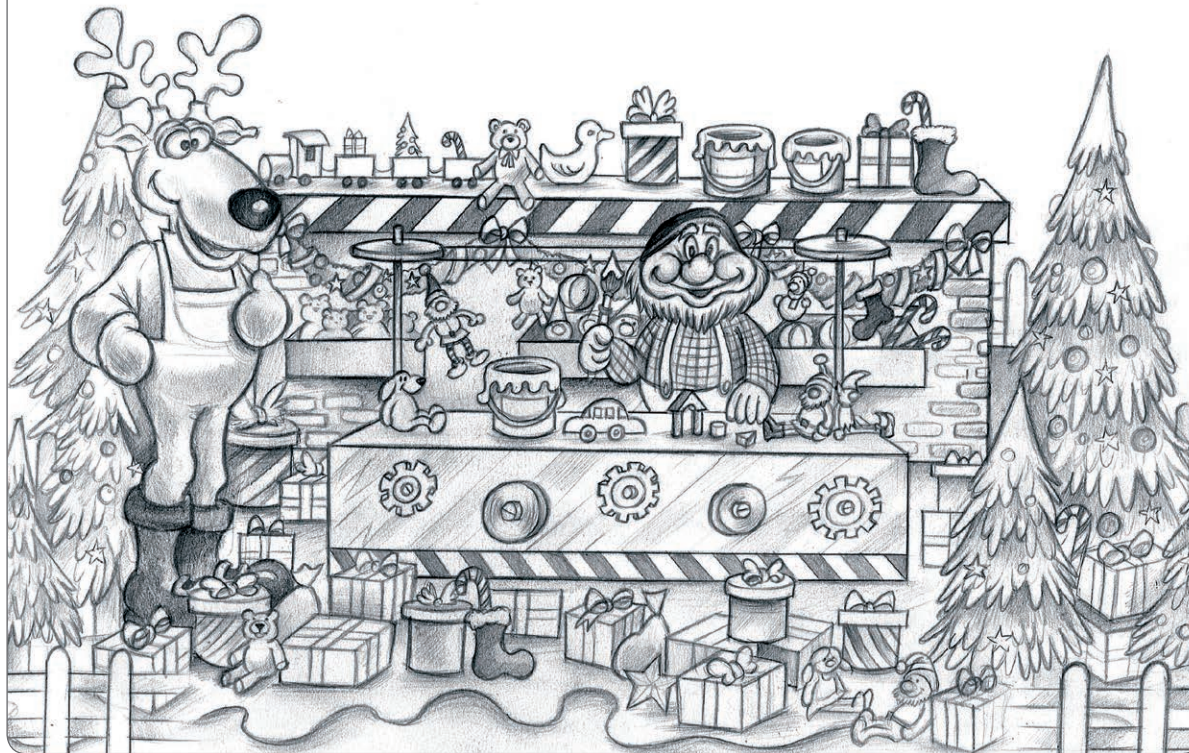
▶ WATCH VIDEO



▶ WATCH VIDEO



A colorful and attractive show
for the public.



CHARACTERS AND THEIR MOVEMENTS

- One reindeer of 180cm dressed in Christmas clothes, it talks, its head and mouth move. It swings its waist and body
- One dwarf of 110cm dressed in traditional clothes, it moves its head, arms

DECORATION OF THE SCENE

- Toy production line with little turning motor wheels, its size is 2.5m (length)
- A wall of 4x1.5m with some drawers filled with little plush toys
- A shelf on the top of the wall decorated with some gift boxes, plush toys and toy
- Two fiberglass paint cans, wooden train, plush toys.
- Wooden floor and fences
- Green carpet
- Artificial snow

SIZE OF THE TOTAL SCENE

- 6x4m / 24m²

SOUND SUPPORT

- One control box.
- Sound equipment with two different programs

LANGUAGES AVAILABLE

- All EU languages, RU

DURATION OF THE SHOW

- Approx. 7-8 min. It includes a dialogue, two Christmas songs and a closing dialogue

2. THE GIFT FACTORY (ATS002)

A friendly reindeer which is in charge of Christmas gifts production at the gift factory greets the public and introduces the production chain where gifts are being prepared for the coming Christmas. It appears that the dwarf is a little lazy and is behind on planning. The reindeer tries to encourage

him to work better and asks the public to help and cheer up the lazy dwarf. They sing Christmas carols and the dwarf starts working again. The reindeer wishes everyone a Merry Christmas and invites the public to come and visit the gift factory again.

Complete the scene with trees, presents and any other decorative items from our catalogue!



An amusing show that involves public participation.

3. THE CHRISTMAS VILLAGE (ATS003)

The big and cute teddy bear greets the public and asks its help in decorating the beautiful Christmas tree. The two elves are on the ladder near the tree holding Christmas baubles and the bear gives them funny instructions and asks the public's opinion. The bear is very picky and is not happy with the result. It always

asks the elves to change the position of the balls on the tree. The elves get angry and refuse to follow the instructions of the bear. To cheer up the elves, the bear starts singing Christmas songs. Finally, the Christmas tree is finished, the bear thanks and says goodbye to the public.

Complete the scene with trees (Hampshire tree – page 144), presents and any other decorative items from our catalogue!



CHARACTERS AND THEIR MOVEMENTS

- Two elves of 110cm dressed up in traditional Christmas clothes, their heads, arms move
- One sitting bear of 110cm, it talks, its mouth and waist move

DECORATION OF THE SCENE

- Two houses with light inside of approx. 2.5x1.4x1.7m
- Two lanterns
- Wooden floor and fences
- Green grass made of material
- Artificial snow, tree cones, petals

SIZE OF THE TOTAL SCENE

- 8x4m / 32m²

SOUND SUPPORT

- One control box
- Sound equipment with 2 different programs

LANGUAGES AVAILABLE

- All EU languages, RU

DURATION OF THE SHOW

- Approx. 7-8 min. It includes a dialogue, two Christmas songs and a closing dialogue.



Hi friends !
Get closer because
we need your help
to decorate this tree

▶ WATCH VIDEO





▶ WATCH VIDEO





A kind show with many colorful characters.



CHARACTERS AND THEIR MOVEMENTS

- One sitting bear of 110cm, it talks, its mouth and waist move
- One swinging horse, 130cm (height) x140cm (large), its mouth moves
- One clown in a surprise box moving from one side to another
- Two driers of 1.7m high, playing drums, move their arms

DECORATION OF THE SCENE

- "Lego look" house 220cmx150cm
- Wooden little train with some plush toys
- Wooden cube of 80cm
- Wooden floor and fences
- Green carpet
- Artificial snow

SIZE OF THE TOTAL SCENE

- 7x5m / 35m²

SOUND SUPPORT

- One control box
- Sound equipment with two different programs

LANGUAGES AVAILABLE

- All EU languages, RU

DURATION OF THE SHOW

- Approx.7-8 min, it includes a dialogue, two Christmas songs and a closing dialogue.

4. TOYLAND (ATS004)

The chubby and cute teddy bear greets the public, introduces itself and its friends – Christmas toys: swinging horse and toy soldiers. The bear and swinging horse start a funny argument about who's the best Christmas toy. But then they come to an agreement that each one of them

has good and bad sides. They start talking about what makes Christmas joyful and end up singing Christmas songs. They wish everyone a merry Christmas and invite the public to come back and see them later.

Complete the scene with trees, presents and any other decorative items from our catalogue!

An entertaining, positive and cute show for kids



CHARACTERS AND THEIR MOVEMENTS

- Five bears of 100cm dressed up in traditional Christmas clothes talk, their mouths and waists move

DECORATION OF THE SCENE

- One igloo
- One snowman
- One small wooden sleigh
- Smalls Christmas decorations: golden bags, Santa's socks, small Christmas ornaments, small plush toys
- Wooden platform covered with some ice made of plaster and glue to have an impression it is an ice rock
- Wooden floor and fences
- Blue carpet
- Artificial snow

SIZE OF THE TOTAL SCENE

- 5x4m / 20m²

SOUND SUPPORT

- One control box.
- Sound equipment with two different programs

LANGUAGES AVAILABLE

- All EU languages, RU.

DURATION OF THE SHOW

- Approx. 7-8 min, it includes a dialogue, tw Christmas songs and a closing dialogue.

5. SINGING BEARS (ATS005)

A bunch of adorable teddy bears is having talks with the public. They introduce themselves by telling that they come from far away to have fun with the kids during the Christmas. The bears say they love Christmas and Christmas entertainments: snowball

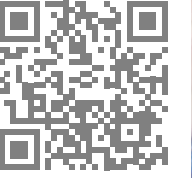
throws and making snowmen. They begin throwing snowballs till one of them gets soaking wet, sneezes from cold and everybody starts laughing. Then the teddy bear sings two Christmas carols, says goodbye to the public till the next show.

Complete the scene with trees, presents and any other decorative items from our catalogue!



We've come especially from Toyland to have a good time with all of you !

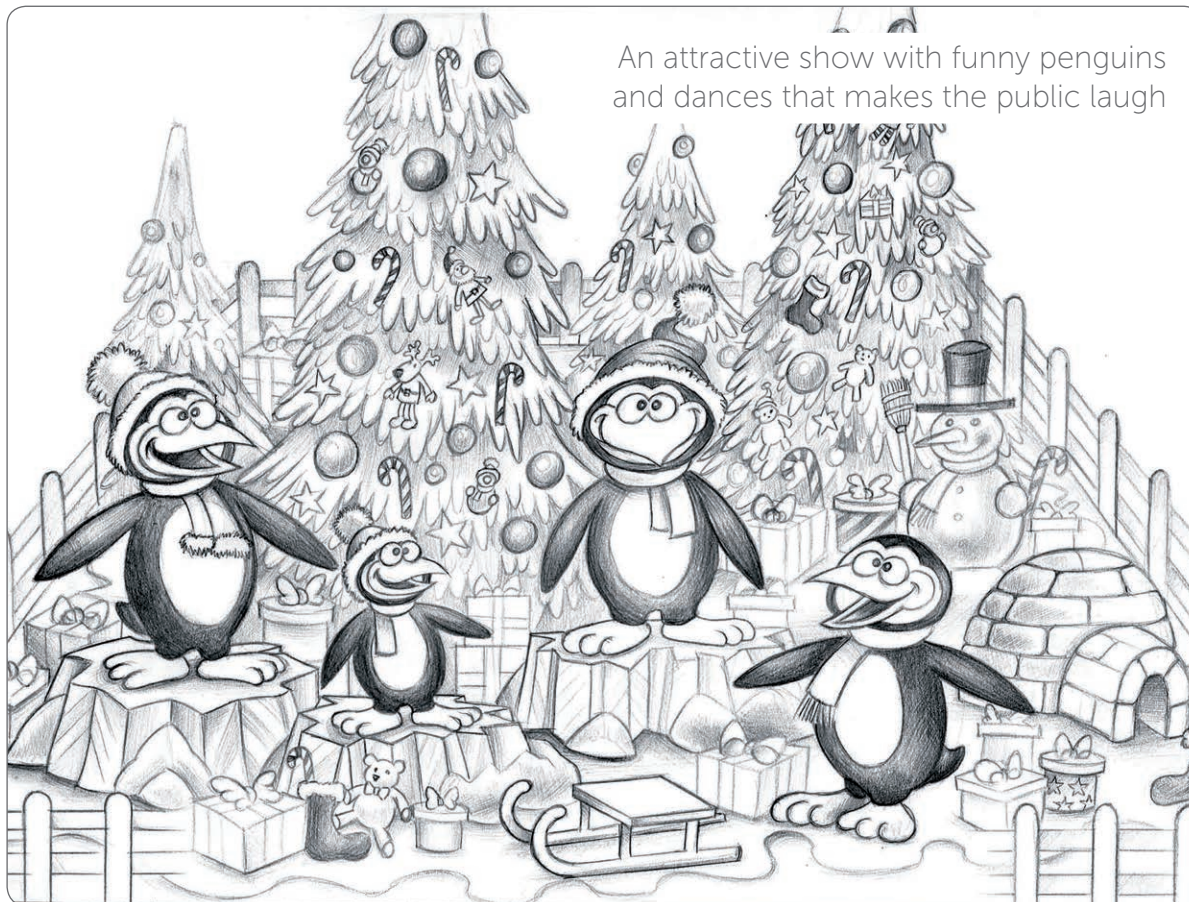
▶ WATCH VIDEO





▶ WATCH VIDEO





An attractive show with funny penguins and dances that makes the public laugh



CHARACTERS AND THEIR MOVEMENTS

- Four penguins talk, their beaks, wings move, their bodies swing
- Two penguins move their heads as well
- Three penguins are 100cm tall, one penguin is 60cm
- They wear Christmas clothes: scarfs and hats

DECORATION OF THE SCENE

- Three icebergs
- An igloo
- A snowman
- A small wooden sleigh
- Wooden floor and fences
- Blue carpet
- Artificial snow

SIZE OF THE TOTAL SCENE

5x5m / 25m²

SOUND SUPPORT

- One control box
- Sound equipment with two different programs

LANGUAGES AVAILABLE

- All EU languages, RU

DURATION OF THE SHOW

- Approx. 7-8 min, it includes a dialogue, two Christmas songs and a closing dialogue

6. HAPPY PENGUINS (ATS006)

The happy, friendly penguins greet the public and announce that since it is Christmas, they have prepared something special to show to the public. The little penguin is the leader and gives some orders to the rest to do a few tests and rehearsals before the big performance.

Then the penguins start singing and dancing. The funniest part of the performance is how the happy penguins move their wings in a synchronized order. After the performance is over, the penguins wish everyone a merry Christmas and say goodbye till the next show.

Complete the scene with trees, presents and any other decorative items from our catalogue!

A spectacular show with beautiful decorations and special sound effects that children and adults will love.



7. THE YETI MOUNTAIN (ATS007)

The Yeti, an enormous mysterious creature that has been sleeping in its snowy cave for a long time, appears from a big trembling mountain and scares the little penguins. The penguins are already ready to run away when the Yeti introduces himself and tells them a little about his lonely life in the snowy mountain. The Yeti is really keen on celebrating Christmas among friends

and he suggests that he and the penguins sing a Christmas song together. The penguins get very excited and everyone starts singing and dancing. After the two Christmas songs the Yeti gets tired and wants to have some rest but he promises to come back. They say goodbye to the public and invite everyone to come back and see them again soon.

Complete the scene with trees, presents and any other decorative items from our catalogue!



CHARACTERS AND THEIR MOVEMENTS

- Yeti of 250cm + 15cm wheels. Yeti talks, his eyes, eyebrows, mouth, head, chest, arms and legs move
- Five penguins: four of them are 100cm high, one is 60cm. Their beak, wings move and they swing. Two penguins talk, move their neck and look at each other. They wear Christmas hats or scarfs

DECORATION OF THE SCENE

- 4.5m high ice-looking mountain made of polystyrene, covered with plaster
- Space taken on the ground is 4.5x3.5m
- The doors open and close and smoke appears when Yeti comes out and gets back in his ice cave
- Two ice rocks, they shake
- An igloo and two ice rocks
- Wooden floor and fences
- Blue carpet on the sides of the scene
- Artificial snow

SIZE OF THE TOTAL SCENE

- 10x8 m / 80m²
- 4.5m high

SOUND SUPPORT

- Two control boxes: 1st -for the mountain and Yeti, 2nd -for the penguins
- Sound equipment with two different programs

LANGUAGES AVAILABLE

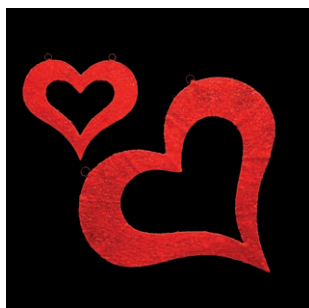
- All EU languages, RU
- Duration of the show: approx. 7-8 min, it includes a dialogue, two Christmas songs and a closing dialogue



▶ WATCH VIDEO







SEASONS

Valentine, Easter, Autumn... so many opportunities to create a seasonal atmosphere. Exclusive and appropriate decorations throughout the year.

Autumn.....	139
Easter	138
Giant Heart.....	136
Heart in Sisal	136
Verona	136



GIANT HEART

1	VAL015	IN	200x200x90cm	230V	55W
/	VAL005		300x300x135cm		

HEART IN SISAL

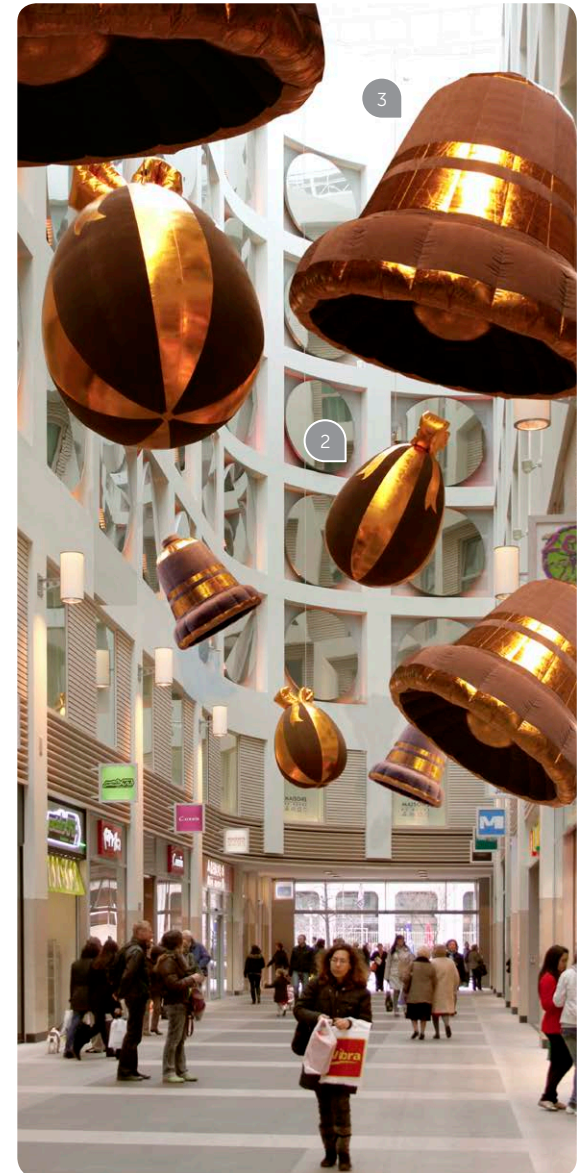
2	VAL006	IN	50x45cm
3	VAL007		100x85cm

VERONA

4	VAL016	IN OUT	65x65cm	230V	9.2W		simply connect
---	--------	-----------	---------	------	------	--	--------------------------

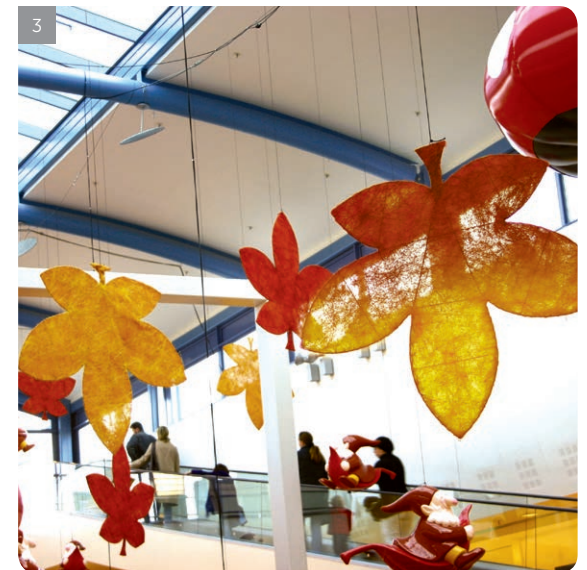






EASTER

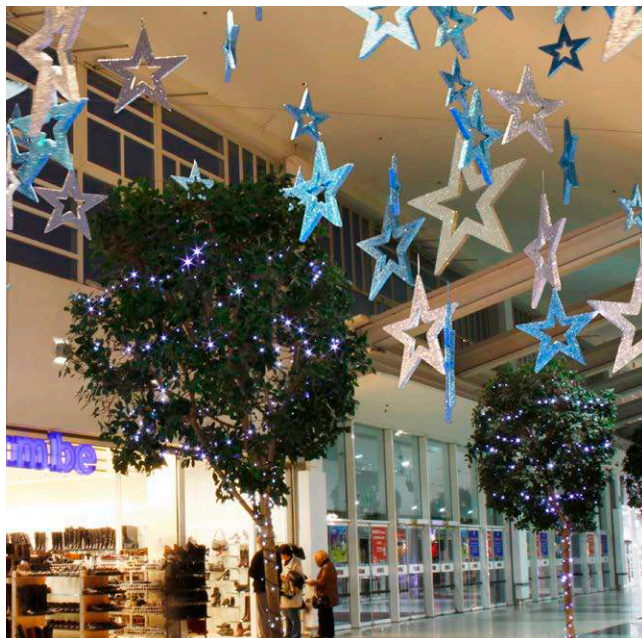
1	EAS24	IN OUT	60x40x40cm				EGG
2	EAS02	IN	275cm	230V	55W	CHOCOLATE & GOLD	GIANT EGG
3	EAS06		280cm				GIANT BELL



AUTUMN

1	AUT001	IN	300x280x280cm	230V	55W	RED & GREEN	GIANT APPLE
2	AUT002		300x250x250cm			RED & YELLOW	GIANT MUSHROOM
3	AUT003		80x70cm	/	/	RED & YELLOW	LEAF IN SISAL

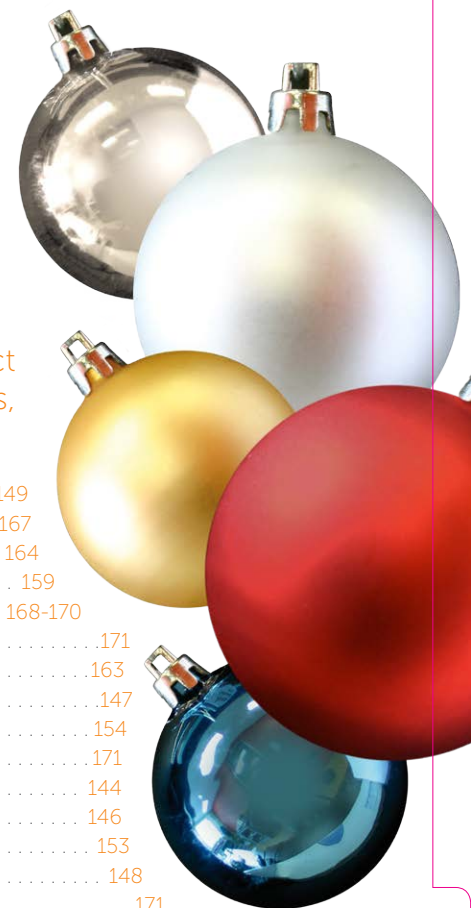




DECO ESSENTIALS

Everything you need for a perfect Christmas atmosphere : fir trees, garlands and ornaments.

Arch Lulea	149
Bow	166-167
Brindisi	164
Chambord	159
Christmas Baubles	168-170
Christmas Rose	171
Christmas Star	163
Davos	147
Decorated Jabot Garland	154
Gift	171
Hampshire	144
Hemberg	146
Jabot Garland	153
Leipzig	148
Malmö	171
Manhattan	156
Morzine	158
Munche	150
Munche Prelit	151
Murano	158
Rimini	160
Salzburg	152
Sherwood	142
Sisal	165
Stavanger	148
Teresina	162
Warwick	164
Westfield	156





SHERWOOD - Lights and decoration not included

1	XMA582	IN	6,5m ⊘ 3.6m	GREEN
2	XMA583		9,6m ⊘ 4.9m	

My Notes *Very natural look*





*The must-have
for your more
traditional
decorations*



HAMPSHIRE - Lights and decoration not included

1	XMA274	<input type="checkbox"/> IN <input type="checkbox"/> OUT	4m Ø 1.55m	GREEN
2	XMA422	<input type="checkbox"/> IN		WHITE
3	XMA275	<input type="checkbox"/> IN <input type="checkbox"/> OUT	6m Ø 2.2m	GREEN
4	XMA423	<input type="checkbox"/> IN		WHITE
5	XMA276	<input type="checkbox"/> IN <input type="checkbox"/> OUT	8m Ø 2.9m	GREEN
/	XMA424	<input type="checkbox"/> IN		WHITE
6	XMA277	<input type="checkbox"/> IN <input type="checkbox"/> OUT	10m Ø 3.3m	GREEN
/	XMA129	<input type="checkbox"/> IN		WHITE
/	XMA278	<input type="checkbox"/> IN <input type="checkbox"/> OUT	12m Ø 4.4m	GREEN
/	XMA138	<input type="checkbox"/> IN		WHITE
/	XMA279	<input type="checkbox"/> IN <input type="checkbox"/> OUT	14m Ø 4.65m	GREEN

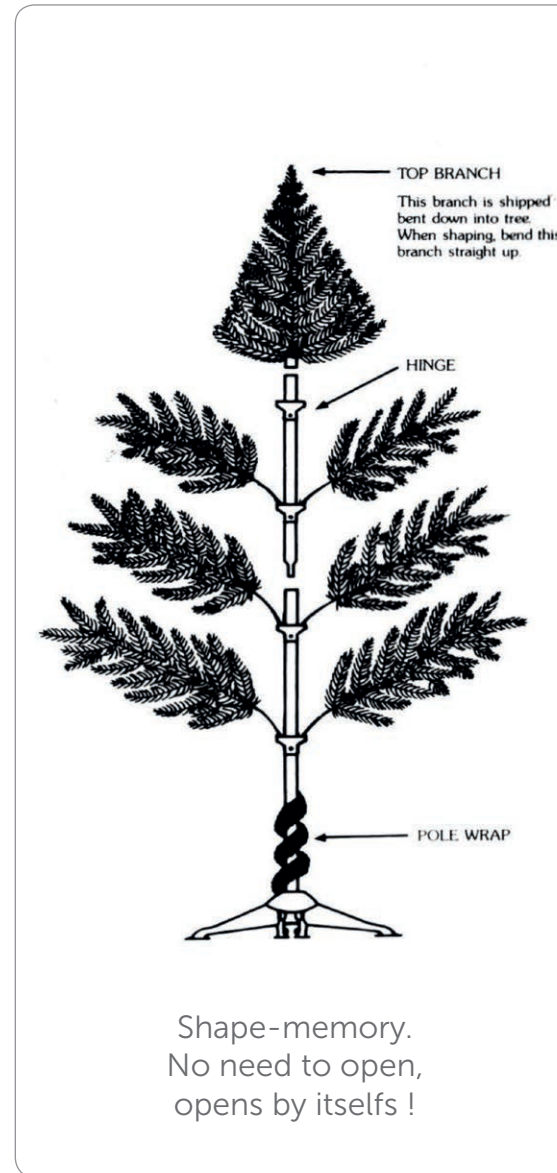




HEMBERG

/ XMA213		1.5m	347 tips	FROSTED MIX TIPS AND PINECONES
1 XMA214		1.8m	581 tips	
/ XMA215	IN	2.1m	847 tips	
/ XMA216		2.4m	1155 tips	
/ XMA219		2.7m	1559 tips	

My Notes *.5 minutes installation!*

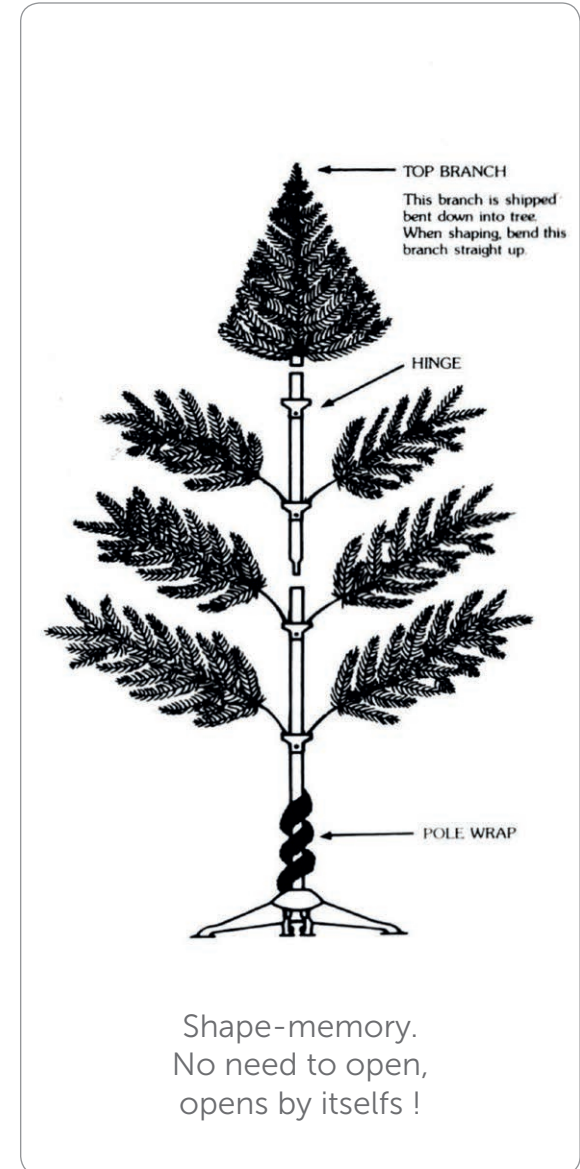




DAVOS - Lights and decoration not included

1	XMA204	IN	1.5m	368 tips
/	XMA205		1.8m	626 tips
/	XMA206		2.1m	948 tips
/	XMA207		2.4m	1360 tips
/	XMA212		2.7m	1772 tips

My Notes *Also shape-memory!*





STAVANGER - Lights and decoration not included

/	XMA259	IN OUT	1.8m	2200 tips	GREEN
1	XMA260		2.1m	3000 tips	

LEIPZIG - Lights not included

2	XMA304	IN	140cm
---	--------	-----------	-------

My Notes *Add lights +/- 12 m - Looks perfect with the Yelki base - see page 207*





ARCH LULEA - Lights and decoration not included

1 XMA090 (half arch-2pcs)

IN

2.5m

1948 tips

GREEN



MUNCHEN - Lights and decoration not included

1	XMA173	IN	270x15cm	WHITE
2	XMA174	IN OUT		GREEN
7	XMA585	IN		GOLD
3	XMA209	IN	270x30cm	WHITE
4	XMA531	IN OUT		GREEN
5	XMA578	IN		GOLD

My Notes

.....





MUNCHEN PRELIT - Decoration not included

1	XMA040	IN								WHITE	
2	XMA110	IN OUT	270x30cm	170	230V	18.4W	NO POWERCORD	simply connect	CONNECT MAX 12		GREEN
3	XMA116	IN OUT								GREEN	



SALZBURG - Lights and decoration not included

1	XMA135	IN OUT	270x20cm	GREEN
2	XMA137	IN		WHITE



JABOT GARLAND

/	XMA187	IN OUT	200x30x30cm	GREEN
1	XMA188		270x40x40cm	

My Notes *Suspension Tube page 206*



DECORATED JABOT GARLAND - Lights not included

/ XMA117	IN	200x30x30cm	GOLD
1 XMA118		270x40x40cm	
2 XMA432	IN	200x30x30cm	RED & GOLD
3 XMA433		270x40x40cm	
4 XMA330	IN	200x30x30cm	WHITE & PEARL
/ XMA331		270x40x40cm	





WESTFIELD - Lights not included

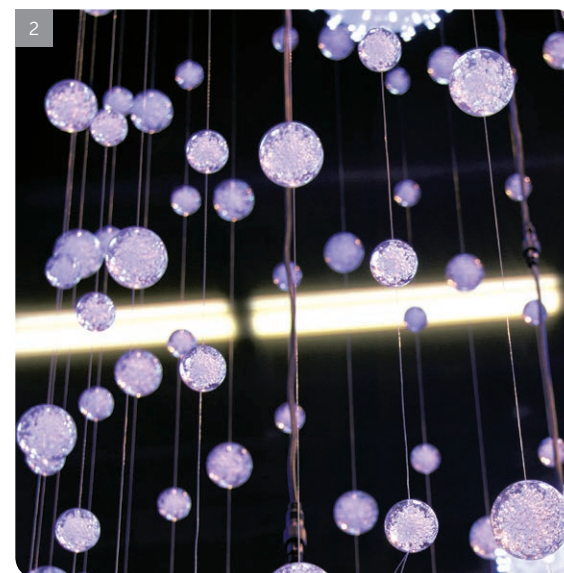
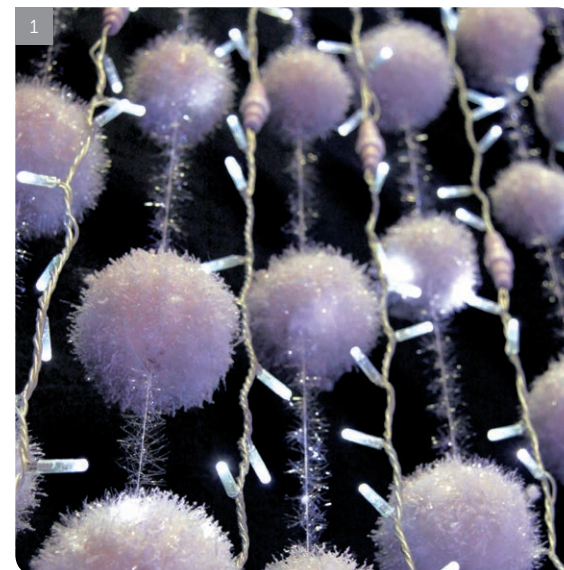
1	XMA522			SILVER
2	XMA523	IN	6x100cm	RED
3	XMA524			GOLD

MANHATTAN - Lights not included

4	XMA525			SILVER
5	XMA526	IN	6x200cm	GOLD





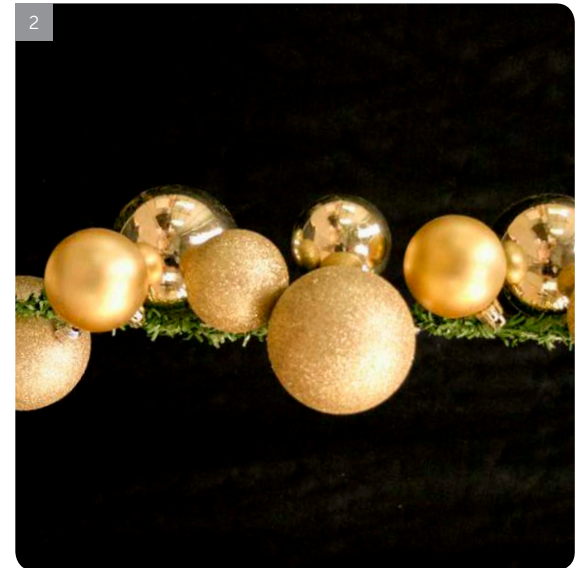


MORZINE

1	XMA376	IN	115cm	3 balls: 60mm and 3 balls: 90mm	WHITE
---	--------	----	-------	---------------------------------	-------

MURANO

2	XMA584	IN	4x300cm	4x10 balls - 40mm	TRANSPARENT
---	--------	----	---------	-------------------	-------------



CHAMBORD - Lights not included

1	XMA595	IN	250x15x15cm	RED & GOLD
2	XMA596			GOLD



RIMINI

1	XMA528 - XMA342 - XMA346 - XMA350	IN	20cm-40cm-60cm-80cm	BLUE
2	XMA553 - XMA344 - XMA348 - XMA352	IN	20cm-40cm-60cm-80cm	SILVER
3	XMA551 - XMA341 - XMA345 - XMA349	IN	20cm-40cm-60cm-80cm	RED
4	XMA552 - XMA343 - XMA347 - XMA351	IN	20cm-40cm-60cm-80cm	GOLD





1

2

Orelcombe

*A walk under
the stars*



TERESINA

1	XMA139	IN OUT	55x55x10cm	GOLD
/	XMA313			SILVER
/	XMA038	IN OUT	75x75x13cm	GOLD
2	XMA314			SILVER
3	XMA009	IN OUT	110x110x20cm	GOLD
/	XMA315			SILVER



CHRISTMAS STAR

1 XMA122

2 XMA218

IN

20cm

GOLD

SILVER



WARWICK

1	XMA037	IN	78x78x5cm
---	--------	----	-----------

BRINDISI

2	XMA052	IN	50x50x2cm
/	XMA021	IN	20x20x1.5cm





SISAL

1 XMA257

IN

100cm

2 XMA333

IN

100x100x100cm



BOW

/ XMA099	IN OUT	38cm	RED & GOLD
1 XMA091		60cm	
2 XMA092		90cm	
3 XMA096	IN	38cm	GOLD
/ XMA097		60cm	



BOW

1	XMA076	IN	10cm (50pcs)	GOLD
2	XMA148			SILVER
3	XMA131	IN	27cm (2pcs)	GOLD
4	XMA141			SILVER



3



4



5



CHRISTMAS BAUBLES

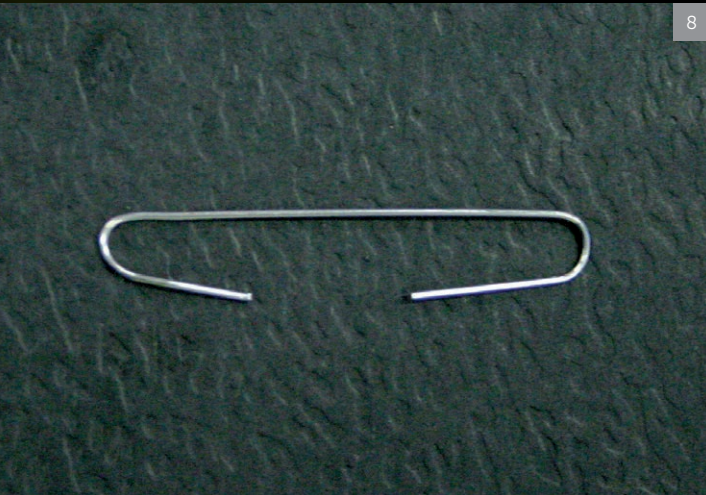
1	XMA620 - XMA627 - XMA634 - XMA641 - XMA648	<input type="checkbox"/> IN <input type="checkbox"/> OUT	6cm - 9cm - 12cm - 15cm - 18cm	RED SHINY
2	XMA621 - XMA628 - XMA635 - XMA642 - XMA649	<input type="checkbox"/> IN <input type="checkbox"/> OUT	6cm - 9cm - 12cm - 15cm - 18cm	RED MAT
3	XMA622 - XMA629 - XMA636 - XMA643 - XMA650	<input type="checkbox"/> IN <input type="checkbox"/> OUT	6cm - 9cm - 12cm - 15cm - 18cm	SILVER SHINY
4	XMA623 - XMA630 - XMA637 - XMA644 - XMA651	<input type="checkbox"/> IN <input type="checkbox"/> OUT	6cm - 9cm - 12cm - 15cm - 18cm	GOLD SHINY
5	XMA624 - XMA631 - XMA638 - XMA645 - XMA652	<input type="checkbox"/> IN <input type="checkbox"/> OUT	6cm - 9cm - 12cm - 15cm - 18cm	GOLD MAT
6	XMA625 - XMA632 - XMA639 - XMA646 - XMA653	<input type="checkbox"/> IN <input type="checkbox"/> OUT	6cm - 9cm - 12cm - 15cm - 18cm	BLUE SHINY
7	XMA626 - XMA633 - XMA640 - XMA647 - XMA654	<input type="checkbox"/> IN <input type="checkbox"/> OUT	6cm - 9cm - 12cm - 15cm - 18cm	WHITE MAT
8	XMA529	<input type="checkbox"/> IN <input type="checkbox"/> OUT	CLIPS FOR CHRISTMAS BALLS - 100PCS	/



6



7



8

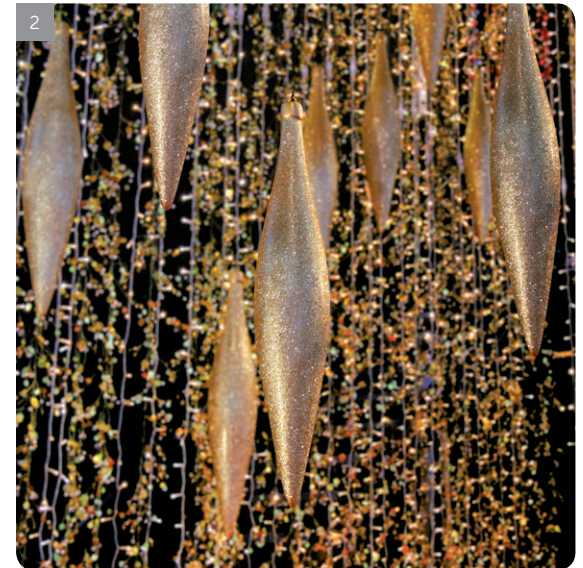


3



CHRISTMAS BAUBLES

1	XMA109 - XMA337	IN OUT	30cm - 40cm	RED SHINY
2	XMA108 - XMA516	IN OUT	30cm - 40cm	SILVER SHINY
3	XMA111 - XMA339	IN OUT	30cm - 40cm	GOLD SHINY
4	XMA619 - XMA517	IN OUT	30cm - 40cm	BLUE SHINY



CHRISTMAS ROSE

1	XMA124	IN	20cm (6pcs)
---	--------	----	-------------

MALMÖ

2	XMA082	IN OUT	85x15x15cm
---	--------	-----------	------------

GIFT

3	XMA087		40x30x30cm
4	XMA114	IN	55x45x45cm
5	XMA089		75x60x60cm





LIGHT ESSENTIALS

It's the essence of Christmas. Lightchains, curtains and spheres are the key products of each Christmas decoration. Give your imagination free rein thanks to our smart connectable products !

Curtain Flash	190
Curtainlight	189
Droplight	188
Duralight	196
Easy Flashlight	181
Easylight	181
Flash Lightchain	175
Flash Sphere	202
Flashlight	180
Flashlight no Powercord	180
Foldable Sphere	201
G-Light	184
Garland Beltlight	198
Icicle	186
Icicle Flash	187
Icicle Flash no Powercord	187
Icicle no Powercord	186
Lamps	199-200
Lightball	203
Low-V Curtain	177
Mikalight	183
Mikalight no Powercord	183
Netlight	185
Playlight	179
Playlight 25m	193
Playlight LED Firecracker	195
Playlight no Powercord	179
Playlight Sphere	202
Rocket Light	182
Steady Lightchain	175
Treelight	194
Twisted Lightchain	176
Waterfall Curtainlight	197
Willow light	192

Low-V connect

NEW 24V CONNECTABLE RANGE

Globalb concept has created a *low-voltage connectable* range.

- Easy
- Safe
- Quick
- Professional

Compatible products can be identified thanks to the Low-V connect logo

see accessories page 211

FR

NOUVELLE GAMME CONNECTABLE 24V

Globalb concept a élaboré une gamme connectable basse tension

Facile • Sûr • Rapide • Professionnel

Les produits compatibles sont identifiables grâce au logo Low-V connect

NL

NIEUW AANSLUITBAAR 24V-GAMMA

Globalb concept ontwikkelde een aansluitbaar gamma op laagspanning

Gemakkelijk • Veilig • Snel • Professioneel

De koppelbare producten zijn herkenbaar aan het Low-V connect logo

DE

NEUE 24V VERBINDBARE SERIE

Globalb concept hat eine neue Reihe von Niederspannungsverbindern entwickelt

Einfach • Sicher • Schnell • Professionell

Kompatible Produkte sind am Logo Low-V connect zu erkennen

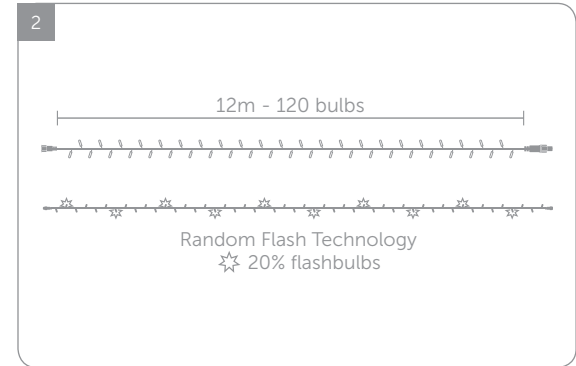
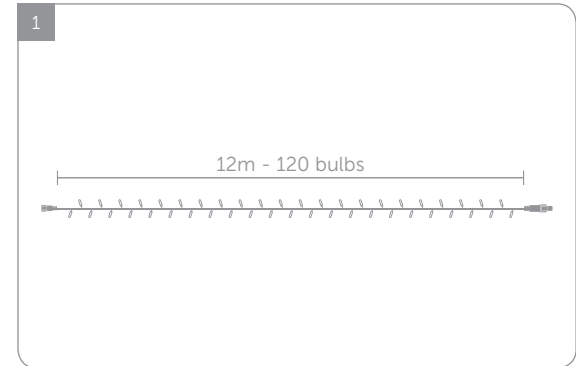
ES

NUEVA GAMA CONECTABLE 24V

Globalb concept ha elaborado una gama conectable baja tensión

Fácil • Seguro • Rápido • Profesional

Los productos compatibles son identificables gracias al logo Low-V connect



STEADY LIGHTCHAIN

NEW	1	LVC-L-NP-LED-12-24V-Z	IN OUT	12m	120	24V	11.5W					Low-V connect
------------	---	-----------------------	-------------------------	-----	-----	-----	-------	--	--	--	--	-------------------------

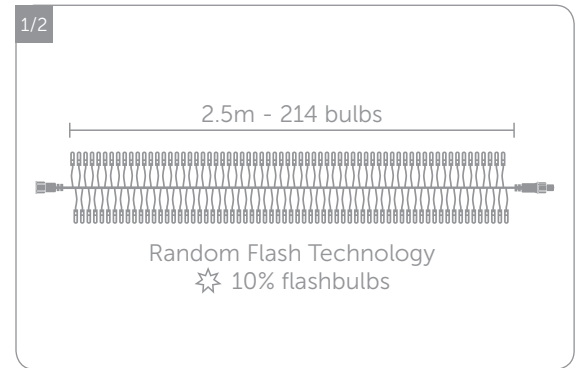
FLASH LIGHTCHAIN

NEW	2	LVC-F-NP-LED-12-24V-Z	IN OUT	12m	120	★RFT 20%	24V	11.5W					Low-V connect
------------	---	-----------------------	-------------------------	-----	-----	-------------	-----	-------	--	--	--	--	-------------------------

LOW-V CONNECT SUPPLY - Choose your switch according to the power needed

NEW	/	LVC-DRIVER-XW-Z	IN OUT		Low-V connect	LED DRIVER SUPPLY- 15/30/60/200W
------------	---	-----------------	-------------------------	--	-------------------------	----------------------------------





TWISTED LIGHTCHAIN

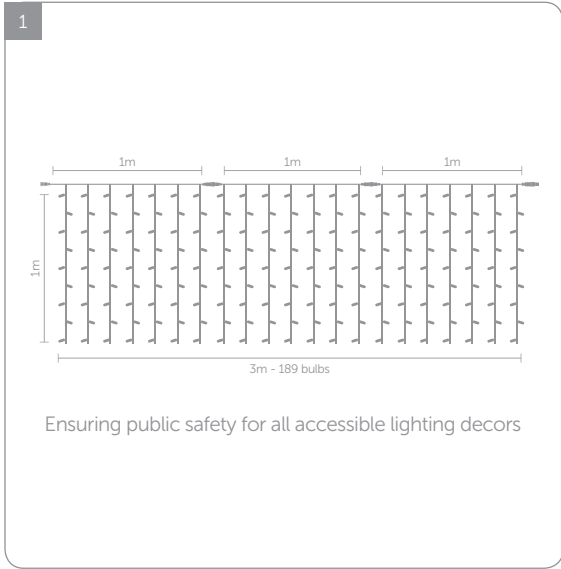
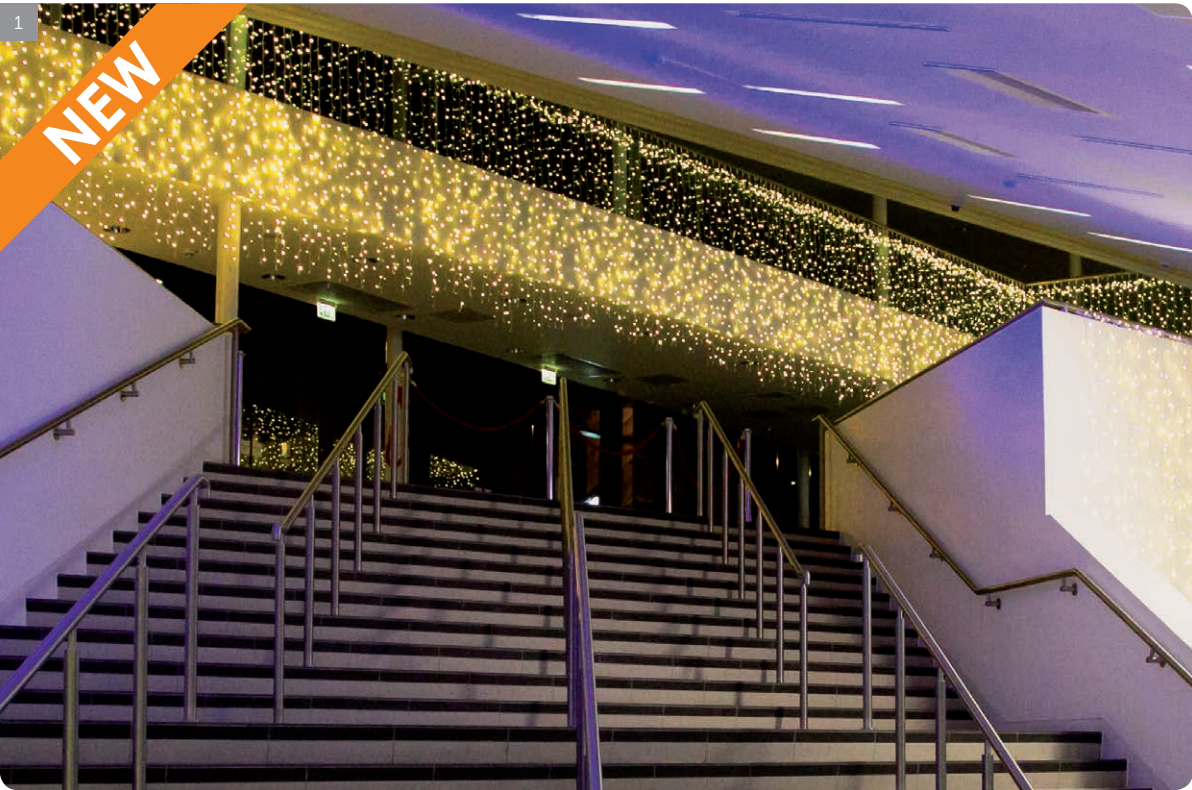
NEW	1	LVC-T-NP-LED-2.5-24V-Z	IN OUT	2.5m	214	★ RFT 10%	24V	18.6W				BLACK		NO POWERCORD	Low-V connect
NEW	2	LVC-T-NP-LED-2.5-24V-Z-W										WHITE			

LOW-V CONNECT SUPPLY - Choose your switch according to the power needed

NEW	/	LVC-DRIVER-XW-Z	IN OUT		BLACK / WHITE	Low-V connect	LED DRIVER SUPPLY- 15/30/60/200W
------------	---	-----------------	---------------	--	---------------	----------------------	----------------------------------

My Notes





LOW-V CURTAIN

NEW	1	LVC-C-NP-LED-3X1-24V-Z-W		3x1m	189	24V	14.7W			WHITE		Low-V connect
------------	---	--------------------------	--	------	-----	-----	-------	--	--	-------	--	---------------

LOW-V CONNECT SUPPLY - Choose your switch according to the power needed

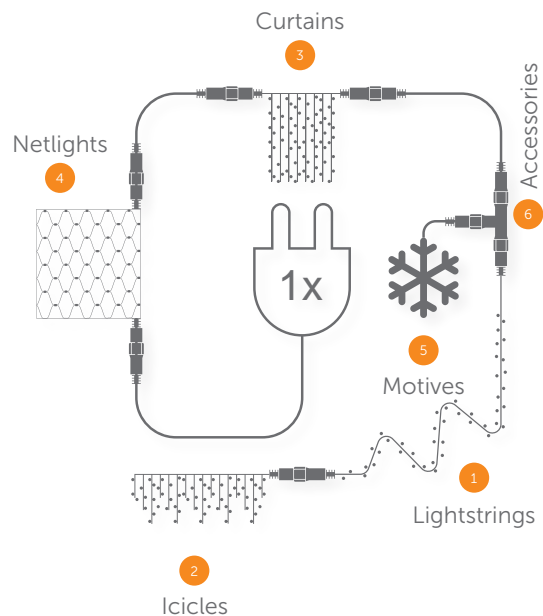
NEW	/	LVC-DRIVER-XW-Z		BLACK / WHITE	Low-V connect	LED DRIVER SUPPLY- 15/30/60/200W
------------	---	-----------------	--	---------------	---------------	----------------------------------

My Notes *Can be used safely on publicly accessible handrails*



simply connect

Simply-connect relates to a range of products that can be connected together and to the accessories to simplify your installations.

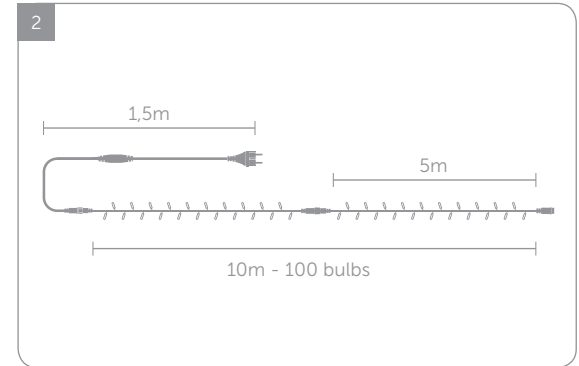


FR Simply-connect se rapporte à une gamme de produits pouvant être connectés ensemble et à des accessoires pour simplifier vos installations.

NL Simply-connect verwijst naar een gamma van producten die zowel onderling alsook met onze toebehoren gekoppeld kunnen worden, om al uw projecten simpeler te maken.

DE Simply-connect bezieht sich auf eine Reihe von Produkten, die sich sowohl miteinander als auch mit weiterem Zubehör verbinden lassen und so die Realisierung Ihrer Installationsideen so simpelst möglich zu machen.

ES Simply-connect se refiere a una gama de productos que pueden ser conectados juntos y a accesorios para simplificar sus instalaciones.



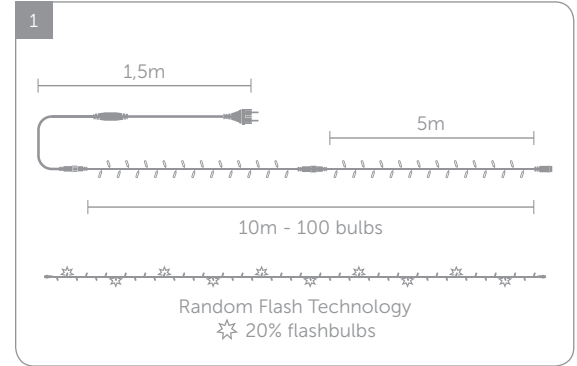
PLAYLIGHT

/	PL-LED-10-230V-Z	IN	10m	100	230V	8.2W			GREEN	simply connect	CONNECT MAX 20
1	PL-LED-10-230V-Z-T								TRANSPARENT		
2	PL-R-LED-10-230V-Z	IN-OUT	10m	100	230V	8.2W			BLACK	simply connect	CONNECT MAX 20
3	PL-R-LED-10-230V-Z-W								WHITE		

PLAYLIGHT NO POWERCORD

/	PL-RNP-LED-10-230V-Z	IN-OUT	10m	100	230V	8.2W			BLACK		NO POWERCORD	simply connect	CONNECT MAX 20
/	PL-RNP-LED-10-230V-Z-W								WHITE		NO POWERCORD	simply connect	CONNECT MAX 20
/	PL-RNP-LED-20-230V-Z-W	IN-OUT	20m	100	230V	8.2W			WHITE		NO POWERCORD	simply connect	CONNECT MAX 10

My Notes *PVC = indoor / Rubber = outdoor / RNP means Rubber No Powercord*



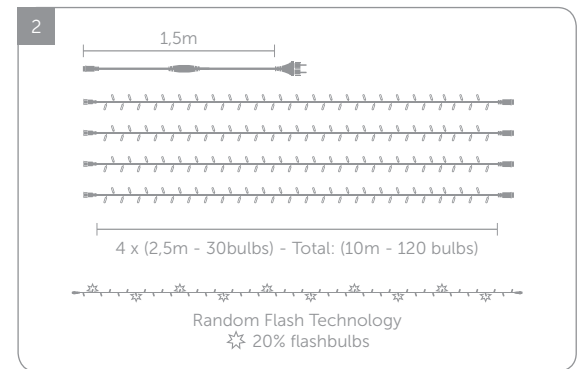
FLASHLIGHT

1	FL-R-LED-10-230V-Z	IN OUT	10m	100	RFT 20%	230V	8.2W	Light Bulb Icons	BLACK	WHITE	simply connect	CONNECT MAX 20
2	FL-R-LED-10-230V-Z-W											

FLASHLIGHT NO POWERCORD

/	FL-RNP-LED-10-230V-Z	IN OUT	10m	100	RFT 20%	230V	8.2W	Light Bulb Icons	BLACK	NO POWERCORD	WHITE	simply connect	CONNECT MAX 20
/	FL-RNP-LED-10-230V-Z-W												

My Notes *Powercords page 210*

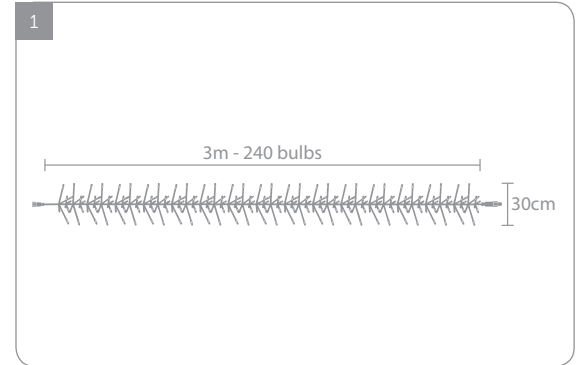


EASYLIGHT


1	EL-R-LED-2.5-230V-Z-W		4x2.5m	4x30	230V	15.2W			WHITE		CONNECT MAX 10
---	-----------------------	--	--------	------	------	-------	--	--	-------	--	----------------

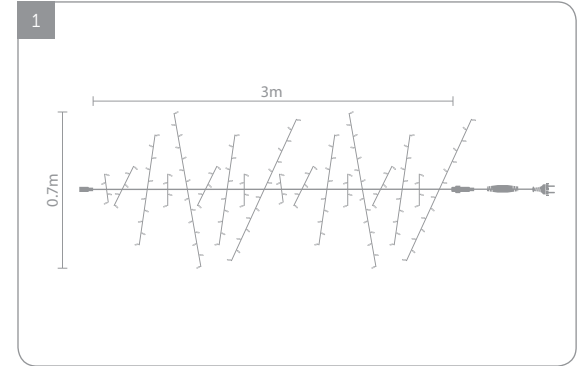
EASY FLASHLIGHT

2	EFL-R-LED-2.5-230V-Z-W		4x2.5m	4x30	230V	15.2W			WHITE		CONNECT MAX 10
---	------------------------	--	--------	------	------	-------	--	--	-------	--	----------------



ROCKET LIGHT

NEW	1	RL-RNP-LED-3-230V-Z	IN OUT	3m	240 	230V	14.4W	 	 WHITE	simply connect
------------	---	---------------------	-------------------	----	---	------	-------	---	---	---------------------------

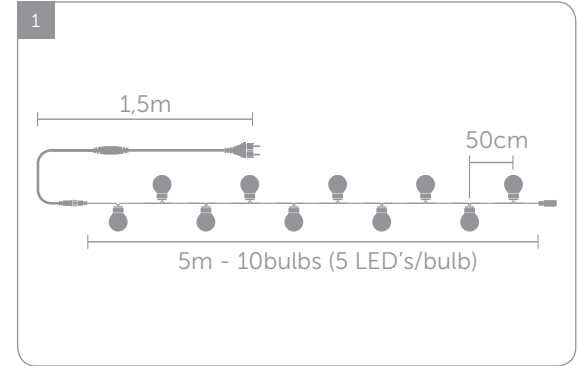


MIKALIGHT

1	ML-R-LED-3-230V-Z		3m	320	230V	23W			WHITE	simply connect	CONNECT MAX 10
---	-------------------	--	----	-----	------	-----	--	--	-------	----------------	----------------

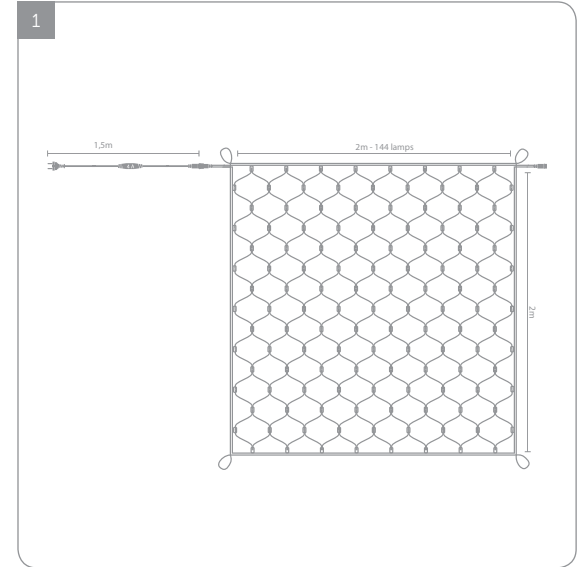
MIKALIGHT NO POWERCORD

2	ML-RNP-LED-3-230V-Z		3m	320	230V	23W			WHITE		simply connect	CONNECT MAX 10
---	---------------------	--	----	-----	------	-----	--	--	-------	--	----------------	----------------



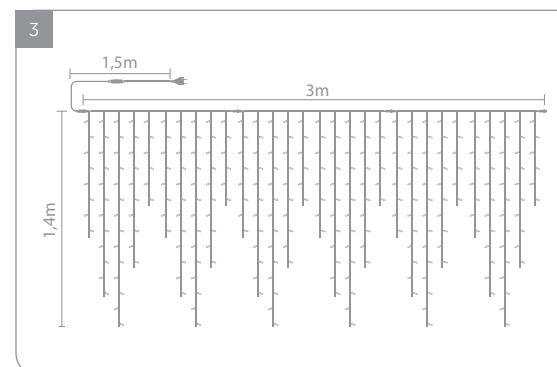
G-LIGHT

1	GL-R-LED-5-230V-Z	IN OUT	5m	10	230V	4.6W		BLACK	simply connect	CONNECT MAX 50
---	-------------------	-----------	----	----	------	------	--	-------	-------------------	-------------------



NETLIGHT

1	NL-R-LED-2X2-230V-B-Z	IN OUT	2x2m	144	230V	13.8W			simply connect	CONNECT MAX 12
---	-----------------------	-------------------------	------	-----	------	-------	--	--	--------------------------	-------------------

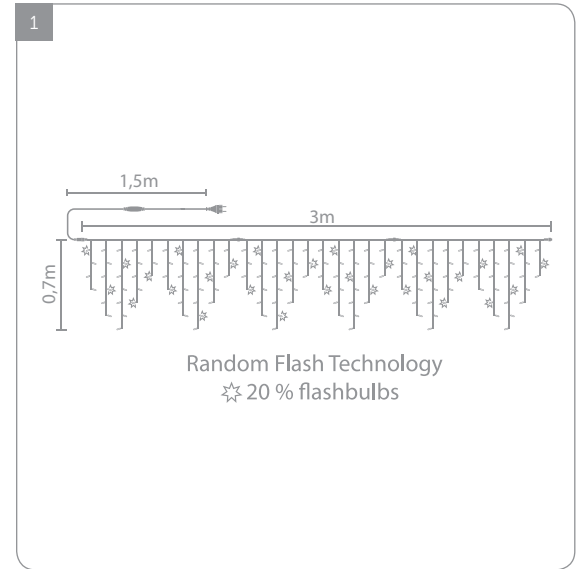


ICICLE

1	CIC-LED-3X0.7-230V-W-Z	IN	3x0.7m	150	230V	13.8W		WHITE	simply connect	CONNECT MAX 12
2	CIC-R-LED-3X0.7-230V-W-Z	IN OUT								
3	CIC-R-LED-3X1.4-230V-W-Z	IN OUT	3x1.4m	300	230V	27.6W		WHITE	simply connect	CONNECT MAX 6

ICICLE NO POWERCORD

/	CIC-RNP-LED-3X0.7-230V-W-Z	IN OUT	3x0.7m	150	230V	13.8W		WHITE		simply connect	CONNECT MAX 12
/	CIC-RNP-LED-3X1.4-230V-W-Z		3x1.4m	300		27.6W					CONNECT MAX 6

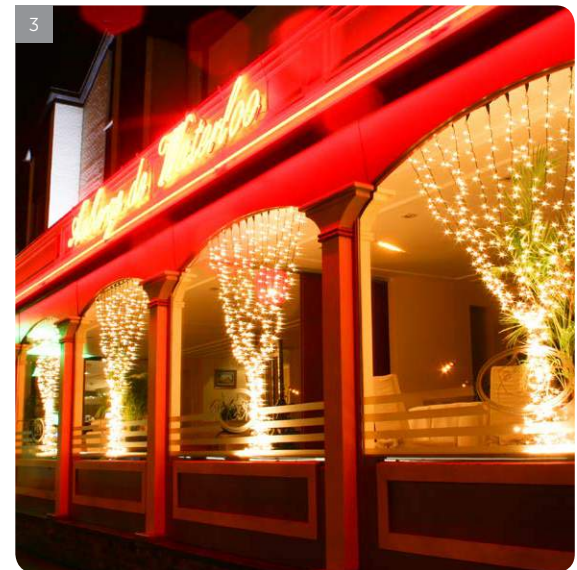
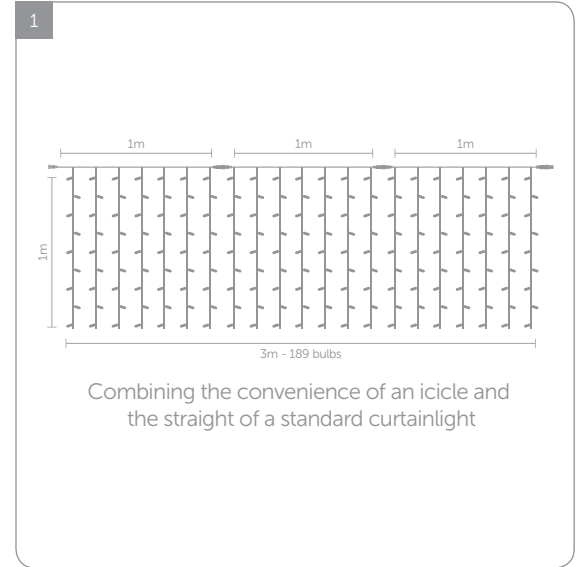


ICICLE FLASH

1	CIC-FL-R-LED-3X0.7-230V-Z-W	IN OUT	3x0.7m	150	☆ RFT 20%	230V	13.8W				CONNECT MAX 12
2	CIC-FL-R-LED-3X1.4-230V-Z-W		3x1.4m	300			27.6W				CONNECT MAX 6

ICICLE FLASH NO POWERCORD

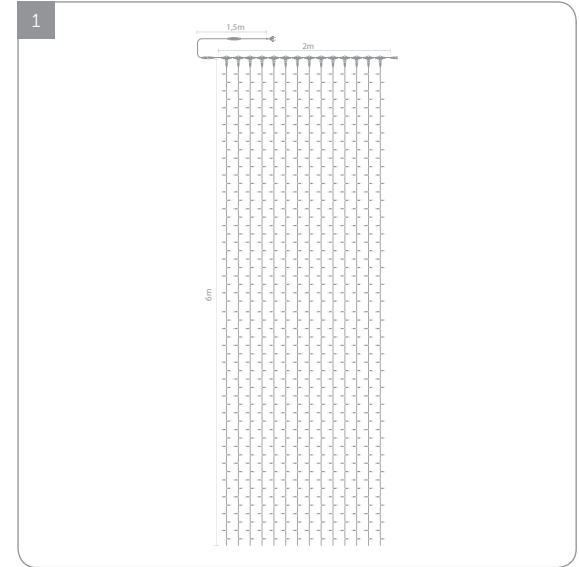
/	CIC-FL-RNP-LED-3X0.7-230V-Z-W	IN OUT	3x0.7m	150	☆ RFT 20%	230V	13.8W					CONNECT MAX 12
/	CIC-FL-RNP-LED-3X1.4-230V-Z-W		3x1.4m	300			27.6W					CONNECT MAX 6



DROPLIGHT

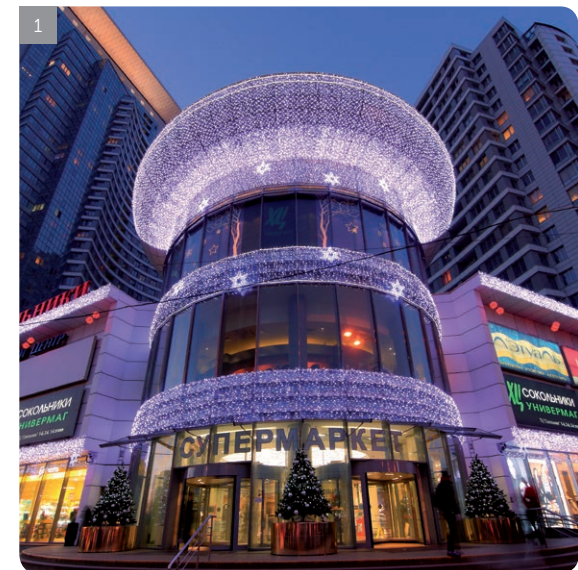
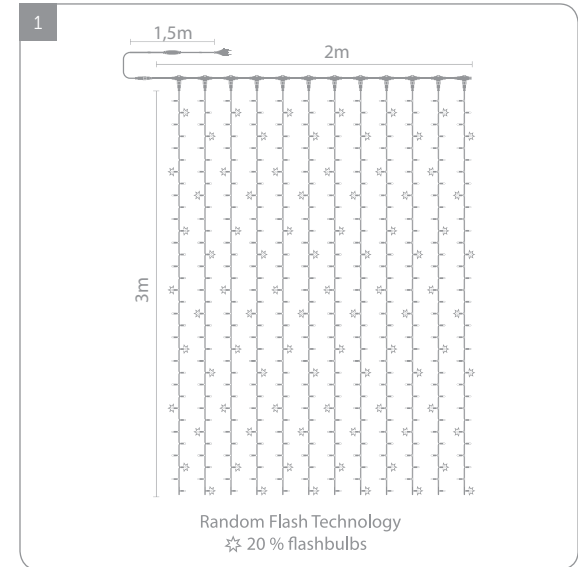
NEW	1	DRL-RNP-LED-3X1-230V-Z-W		3x1m	189	13.8W					CONNECT MAX 12		
NEW	2	DRL-RNP-LED-3X1.5-230V-Z-W	IN OUT	3x1.5m	294	230V 27.6W				WHITE		simply connect	CONNECT MAX 6
NEW	3	DRL-RNP-LED-3X2-230V-Z-W		3x2m	399	27.6W						CONNECT MAX 6	

My Notes



CURTAINLIGHT

1	CL-LED-1.5X2-230V-W-Z		1.5x2m	240		46W			CONNECT MAX 12
	CL-LED-2X3-230V-W-Z	IN	2x3m	490	230V	64.4W			CONNECT MAX 10
	CL-LED-2X6-230V-W-Z		2x6m	980		64.4W			CONNECT MAX 8
	CL-R-LED-1.5X2-230V-W-Z		1.5x2m	240		46W			CONNECT MAX 12
	CL-R-LED-2X3-230V-W-Z	IN OUT	2x3m	490	230V	64.4W			CONNECT MAX 10
	CL-R-LED-2X6-230V-W-Z		2x6m	980		64.4W			CONNECT MAX 8
2	CL-R-LED-2X6-230V-B-Z	IN OUT	2x6m	980	230V	64.4W			CONNECT MAX 8



CURTAIN FLASH

/	CL-FL-R-LED-1.5X2-230V-W-Z		1.5x2m	240		46W			CONNECT MAX 12
/	CL-FL-R-LED-2X3-230V-W-Z	IN OUT	2x3m	490	☆RFT 20%	230V	64.4W	WHITE	CONNECT MAX 10
1	CL-FL-R-LED-2X6-230V-W-Z		2x6m	980			64.4W		CONNECT MAX 8
/	CL-FL-R-LED-2X6-230V-B-Z	IN OUT	2x6m	980	☆RFT 20%	230V	64.4W	BLACK	CONNECT MAX 8

Preview of our other Light Essentials



WILLOW LIGHT
p.192



PLAYLIGHT 25m
p.193



TREELIGHT
p.194



PLAYLIGHTED FIRECRACKER
p.195



DURALIGHT
p.196



WATERFALL CURTAINLIGHT
p.197



GARLAND BELTLIGHT
p.198



LAMPS
p.199



FOLDABLE SPHERE SIMPLY-CONNECT
p.201



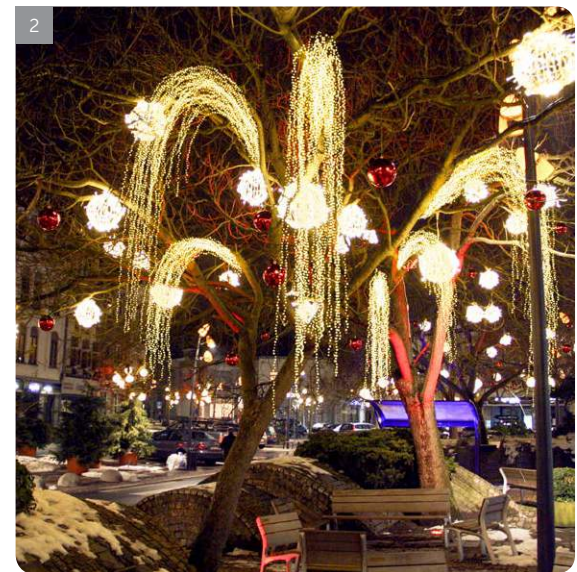
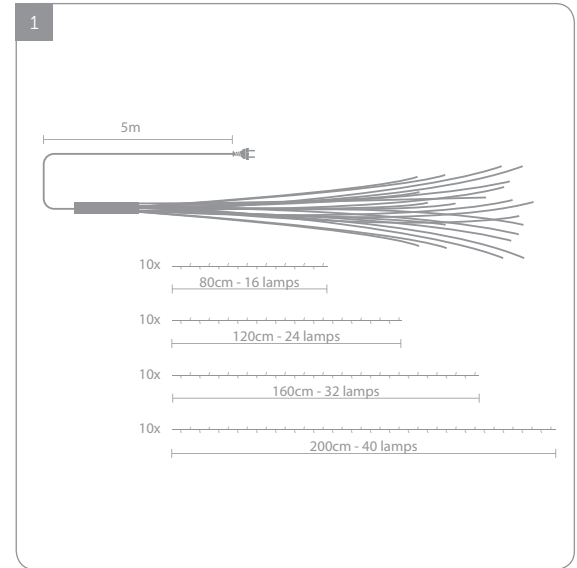
PLAYLIGHT SPHERE SIMPLY-CONNECT
p.202



FLASH SPHERE SIMPLY-CONNECT
p.202

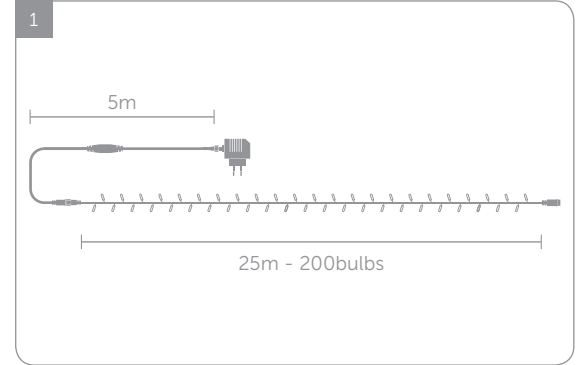


LIGHTBALL SIMPLY-CONNECT
p.203



WILLOW LIGHT

1	WLL-LED-2-1120-24V-Z	IN OUT	2m	1120	*RFT 12%	230V	75W	
2	WLL-LED-2-1568-24V-Z			1568			100W	



PLAYLIGHT 25M

1 PL-LED-25-24V-Z



25m

200

24V

6.3W

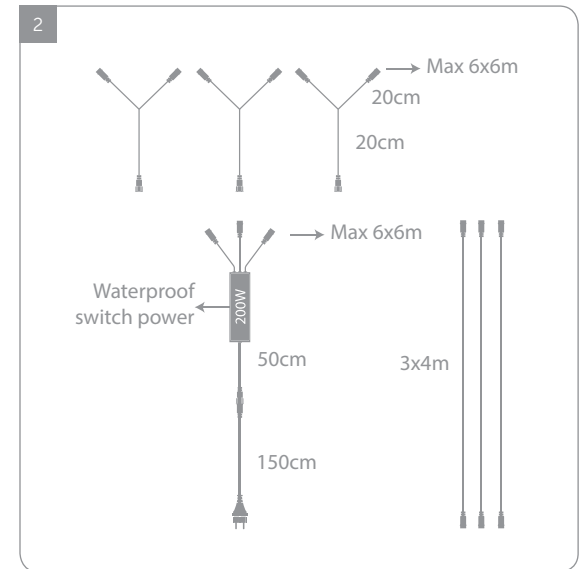
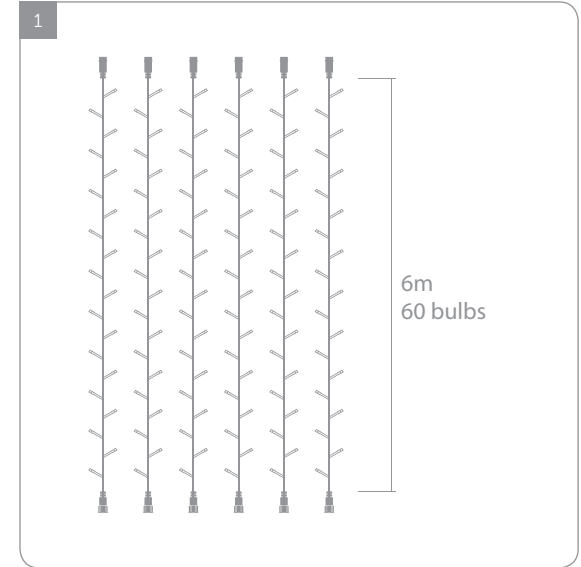


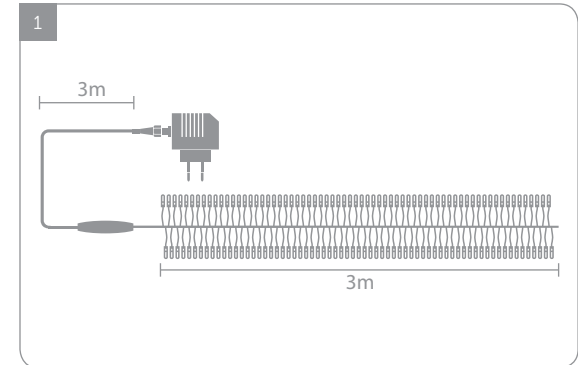
CONNECT MAX 2



TREELIGHT

1	TL-FL-NP-LED-6-24V-Z		6m / string	60		24V	4.8W			CONNECT MAX 36
2	TL-NP-LED-SWITCH		/	/	/	24V	200W	/		/





PLAYLIGHT LED FIRECRACKER

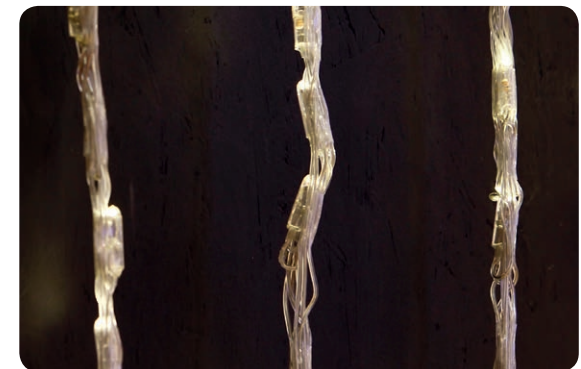
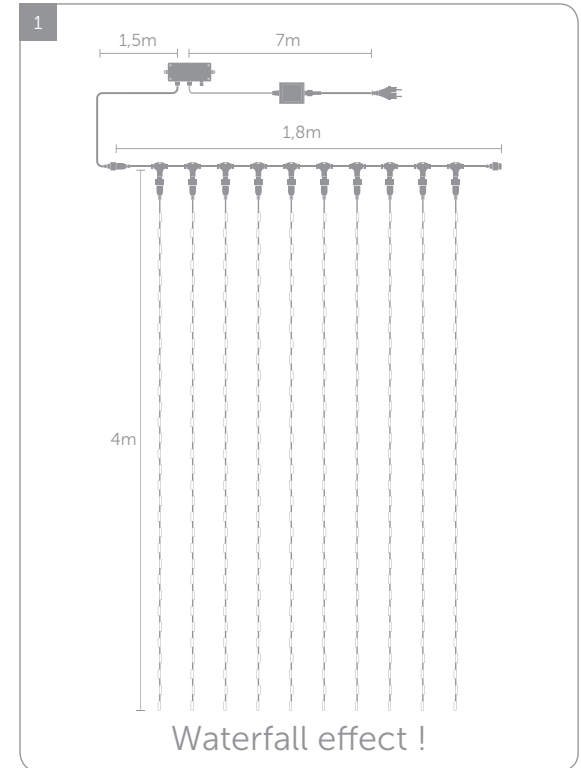
1	PLFM-LED-3.0-24V-Z		3m	390	31V	6W			/
2	PLFM-LED-5.0-24V-Z		5m	650	31V	9W			CONNECT MAX 2



DURALIGHT - See our price list for our Duralight accessories

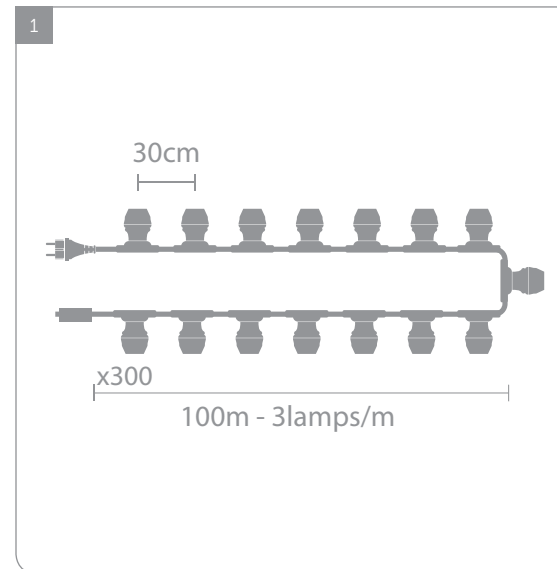
1	DLP-LED-2W-44M-Z	<input type="checkbox"/> IN <input type="checkbox"/> OUT	44m	1584	230V	74.8W	
/	DLP-LED-2W-45M-Z	<input type="checkbox"/> IN <input type="checkbox"/> OUT	45m	1620	230V	51W	
/	DLS-LED-2W-45M-Z	<input type="checkbox"/> IN <input type="checkbox"/> OUT	45m	1350	230V	207W	
2	DLS-LED-2W-90M-Z	<input type="checkbox"/> IN <input type="checkbox"/> OUT	90m	2700	230V	414W	

My Notes *DLS cuttable every meter*



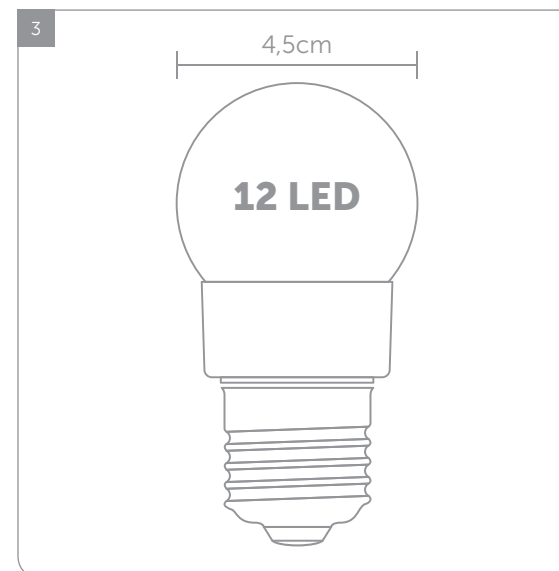
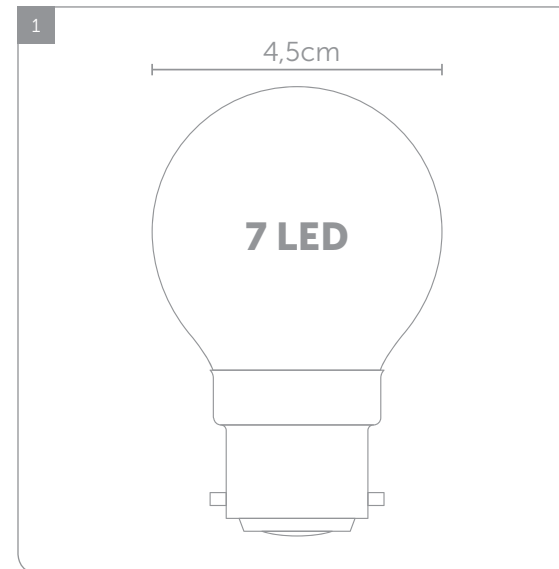
WATERFALL CURTAINLIGHT

1	CLW-LED-1.8X4-24V-Z	IN OUT	1.8x4m	840 ANIMATED	24V	57.6W		TRANS- PARENT	CONNECT MAX 2
2	CLW-LED-1.8X6-24V-Z		1.8x6m	1120 ANIMATED		76.8W			



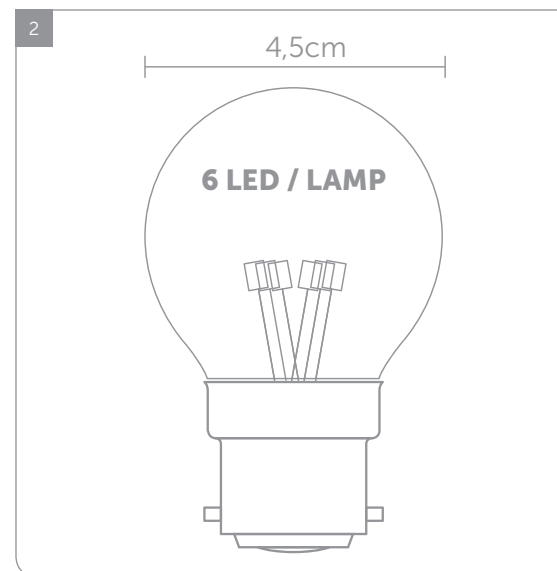
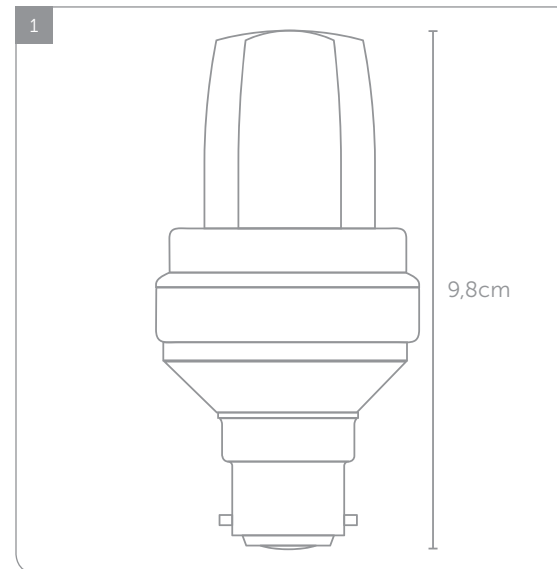
GARLAND BELTLIGHT

1	BL-R-B22-100-300	IN OUT	100m	300 SOCKETS	230V	BLACK	B22
/	BL-R-E27-100-300						E27



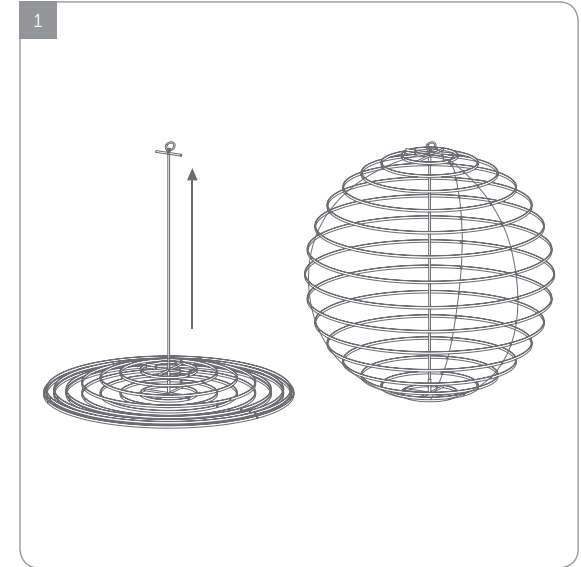
LAMPS

1	BL-B22-LED-Z-4	IN OUT	4 LAMPS	7 LED	0.5W		B22
2	BL-E27-LED-Z-4		E27				
/	BL-B22-POWER-Z-4	IN OUT	4 LAMPS	12 LED	1W		B22
3	BL-E27-POWER-Z-4		E27				



LAMPS

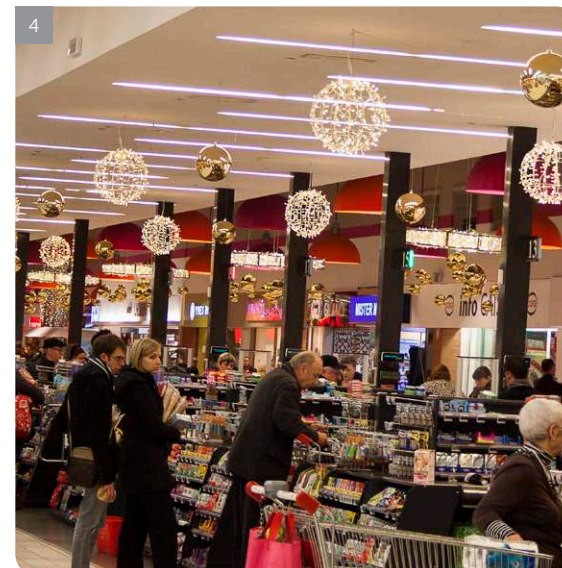
1	BL-B22-FLASH-W-4	IN OUT	4 LAMPS	3W		B22
/	BL-E27-FLASH-W-4					E27
2	BL-B22-INCALED-Z-4			0.6W		B22



FOLDABLE SPHERE

1	FLS-LED-0.7-230V-Z	IN OUT	0.7m	186	230V	8.9W		simply connect
2	FLS-LED-1.0-230V-Z		1.0m	380		18.2W		
3	FLS-LED-1.2-230V-Z		1.2m	540		25.9W		

My Notes *Easy installation and easy storage*



PLAYLIGHT SPHERE

1	PLS-LED-0.3-230V-Z	IN OUT	0.3m	120	230V	18.4W		WHITE	simply connect
2	PLS-LED-0.5-230V-Z		0.5m	320		36.8W			
3	PLS-LED-0.8-230V-Z		0.8m	550		73.6W			

FLASH SPHERE

4	PLS-FL-LED-0.3-230V-Z	IN OUT	0.3m	120	★RFRT 20%	230V	18.4W		WHITE	simply connect
/	PLS-FL-LED-0.5-230V-Z		0.5m	320			36.8W			
/	PLS-FL-LED-0.8-230V-Z		0.8m	550			73.6W			



LIGHTBALL

1	LB-S-LED-230V-Z	IN OUT	18cm	74	230V	3.6W		BLACK	simply connect
2	LB-L-LED-230V-Z		30cm	110		7.2W			





FACILITATORS

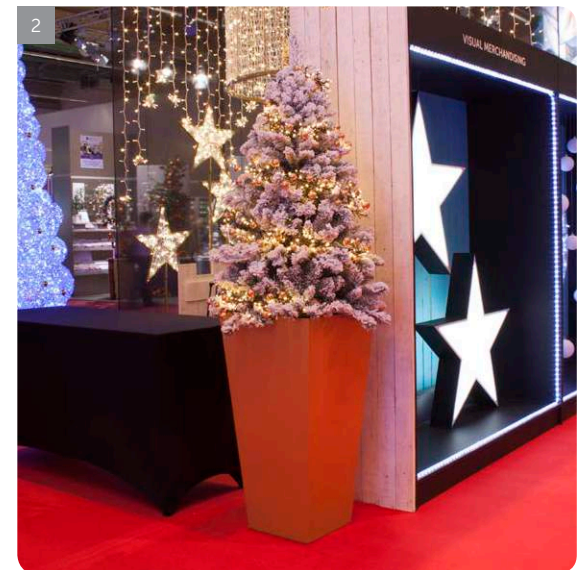
Our accessories guarantee easy installation and safety for an aesthetically pleasing and professional result.

Ballast	212
Bracket	214
Low-V connect	211
Rockhampton	207
Simply-connect	208-209-210
Suspension Frame	213
Suspension Tube	206
Universal Modulator	215
Windclips	212
Yelki	207



SUSPENSION TUBE

1	XMA161	IN OUT	200cm	SILVER
2	XMA162		270cm	
3	XMA064	IN OUT	200cm	GOLD
4	XMA063		270cm	



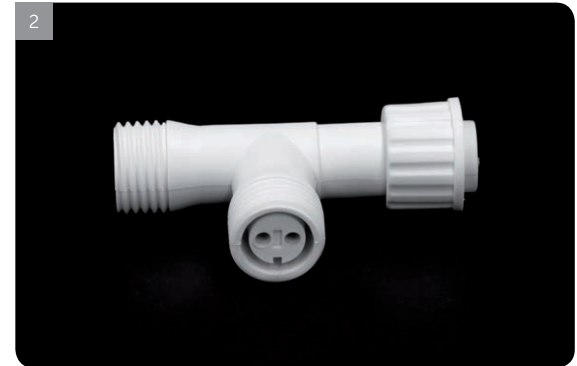
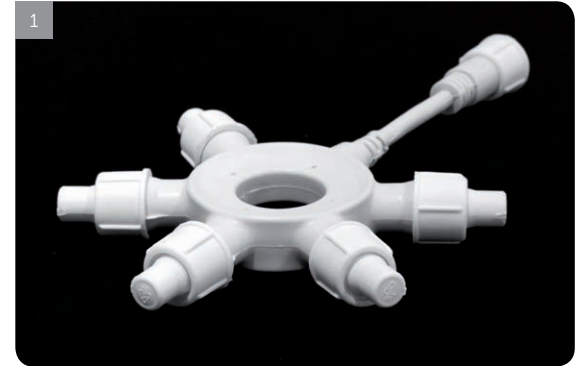
ROCKHAMPTON

1	XMA663	IN	55x55x37cm	WHITE & GOLD
/	XMA664		65x65x37cm	

YELKI

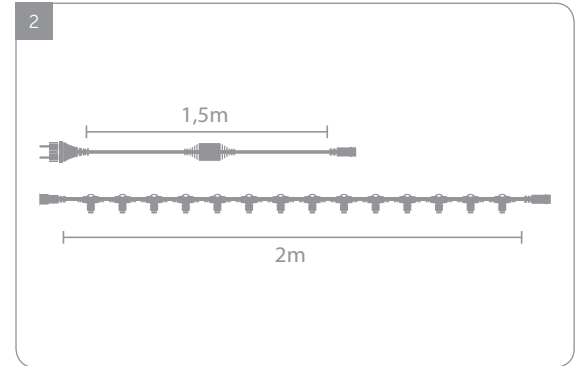
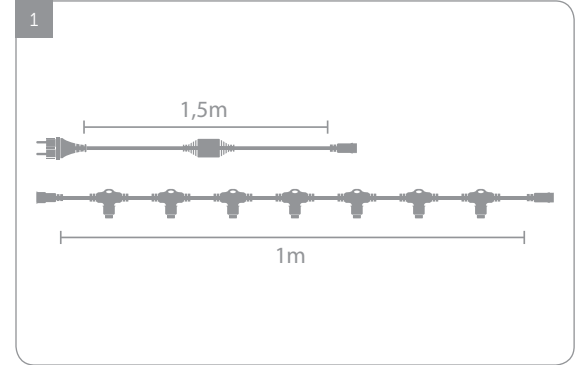
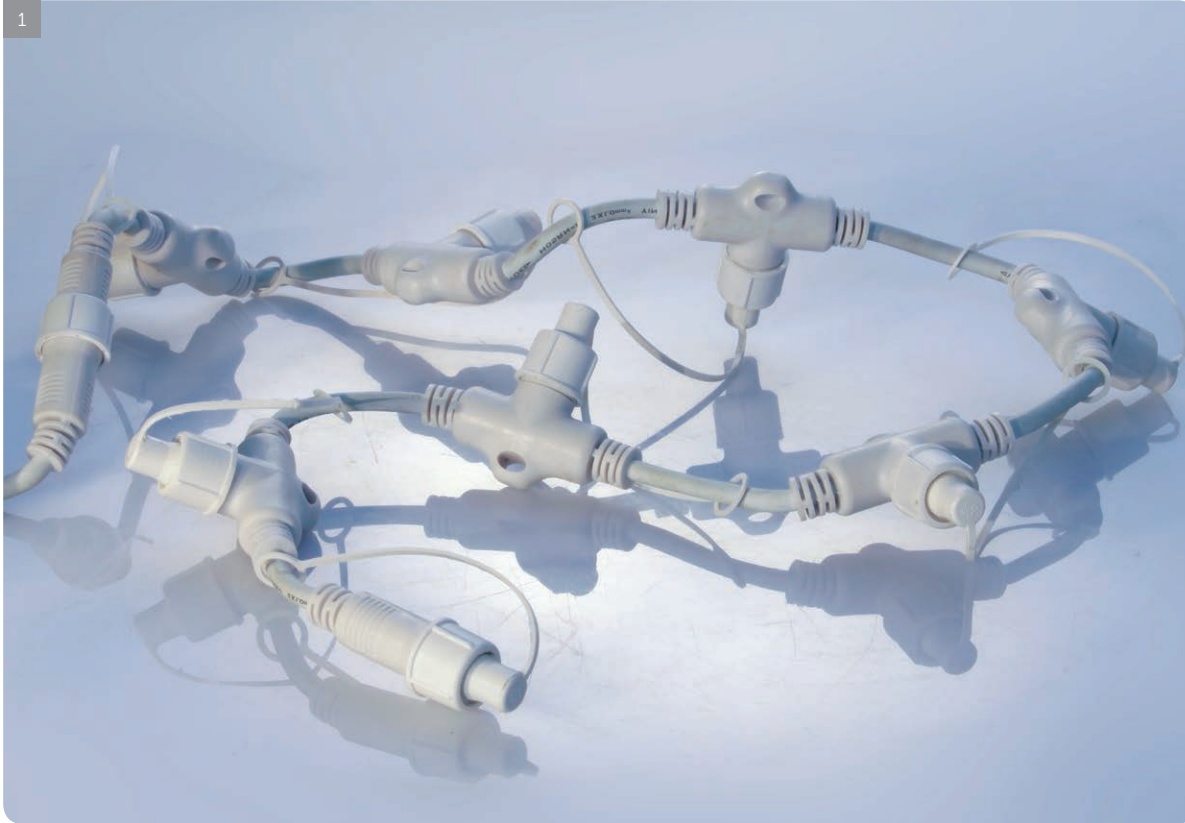
2	XMA077	IN	100x50x50cm	GOLD
---	--------	----	-------------	------

My Notes *Beautiful item to hide the cables or the foot of the tree*



SIMPLY-CONNECT

1	EC-MULTI-Z				MULTI CONNECTOR - 5x350W
2	EC-T-Z				T CONNECTOR - MAX 2x950W
/	EC-EXT-1.0-Z				EXTENSION - 1m - MAX 1800W
3	EC-EXT-2.0-Z				EXTENSION - 2m - MAX 1800W



SIMPLY-CONNECT

1 EC-MAIN-1-7-Z

IN
OUT

BLACK / WHITE

simply
connect

MAIN CABLE - 1m - 7 CONNECTORS - MAX 650W

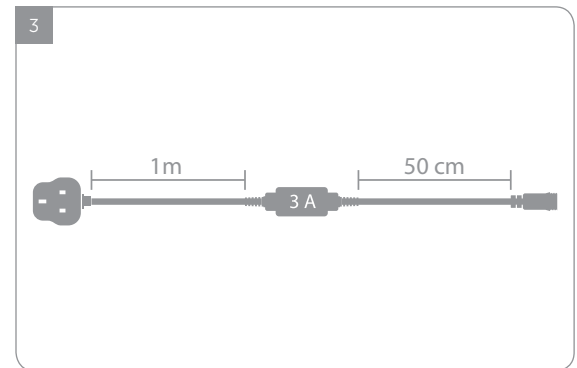
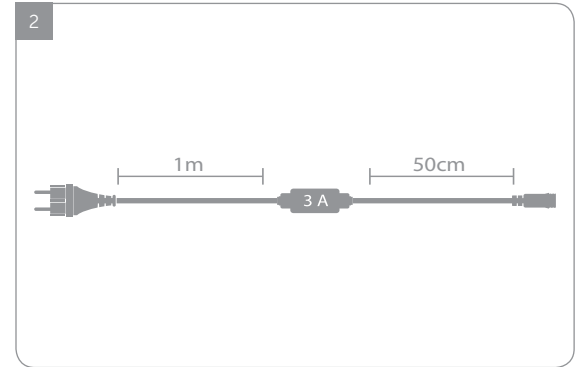
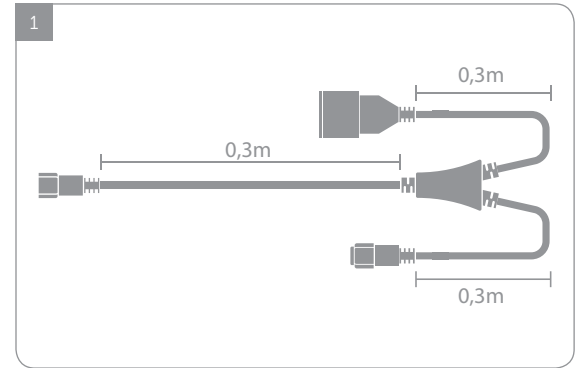
2 EC-MAIN-2-14-Z

MAIN CABLE - 2m - 14 CONNECTORS - MAX 650W

3 EC-MAIN-2-20-Z

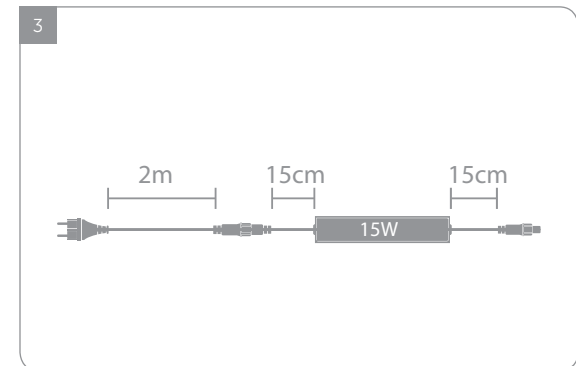
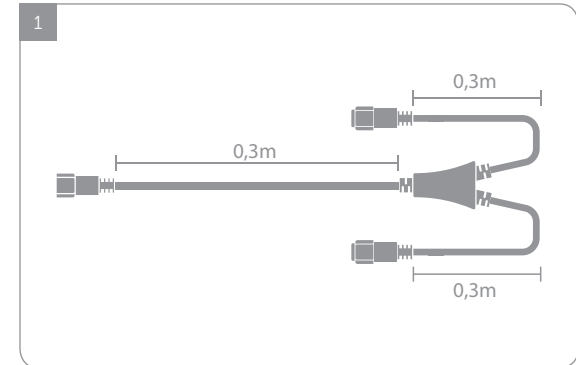
MAIN CABLE - 2m - 20 CONNECTORS - MAX 650W

My Notes *Use to create starry ceilings*



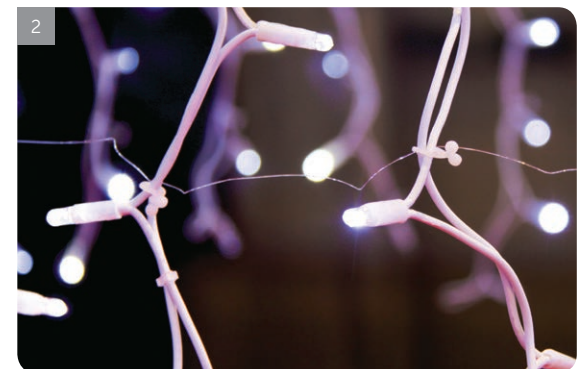
SIMPLY-CONNECT

1	EC-Y		BLACK		Y CONNECTOR (WITH A UNIVERSAL PLUG) - MAX 1900W
2	EC-POWER-LED-3A-Z	IN OUT		simply connect	POWERCORD LED 3A - MAX 640W
3	EC-POWER-LED-3A-Z-BS		BLACK / WHITE		POWERCORD LED 3A - BRITISH STANDARD - MAX 640W



LOW-V CONNECT - Choose your switch according to the power needed

NEW	1	LVC-Y-Z	IN OUT	BLACK / WHITE	low-V connect	Y CONNECTOR
NEW	/	LVC-EXT-1-Z				EXTENSION - 1m
NEW	2	LVC-EXT-3-Z	IN OUT	BLACK / WHITE	low-V connect	EXTENSION - 3m
NEW	/	LVC-EXT-10-Z				EXTENSION - 10m
NEW	3	LVC-DRIVER-15W-Z				LED DRIVER - 15W
NEW	/	LVC-DRIVER-30W-Z				LED DRIVER - 30W
NEW	/	LVC-DRIVER-60W-Z	IN OUT	BLACK / WHITE	low-V connect	LED DRIVER - 60W
NEW	4	LVC-DRIVER-200W-Z				LED DRIVER - 200W

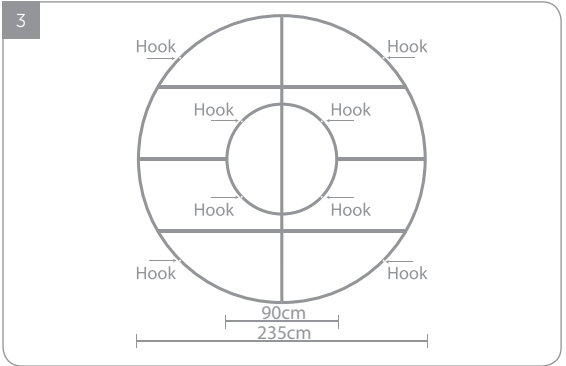
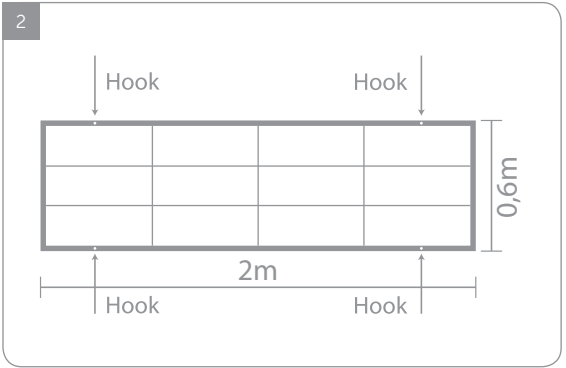


BALLAST

1	XMA534		5x60g	BALLAST FOR LIGHTSTRINGS
---	--------	--	-------	--------------------------

WINDCLIPS - Avoid tangling thanks to Windclip !

2	XMA266		6x105cm	WINDCLIPS FOR CURTAINLIGHT - 6x8 CLIPS
---	--------	--	---------	--



SUSPENSION FRAME

1	XMA142	IN OUT	200x200cm	SUSPENSION FRAME - SQUARE
2	XMA143		200x60cm	SUSPENSION FRAME - RECTANGULAR
/	XMA164		115x115cm	SUSPENSION FRAME - CIRCLE
3	XMA166		235x235cm	

My Notes *Multiple possibilities to create all kind of chandeliers*.....



BRACKET

1	LMS-FIX-20 (2pcs)	IN OUT	STRUCTURE 20mm	POLE OR WALL BRACKET FOR LIGHTMOTIVES
2	LMS-FIX-25 (2pcs)		STRUCTURE 25mm	
3	LMS-BRACKET	IN OUT	80cm	SUPPORT BRACKET

My Notes *Check with Global which fixation to use*



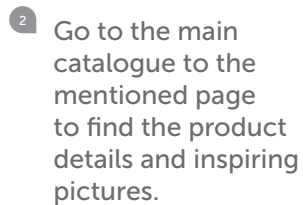
UNIVERSAL MODULATOR

1 FP-1000W



MODULATOR 8 PROGRAMS (MAX 1000W)

Get inspired by our practical guide...



FR Laissez notre guide pratique vous inspirer...

- 1 Sélectionnez le produit qui vous intéresse.
- 2 Rendez-vous dans le catalogue principal à la page indiquée pour obtenir les détails du produit et des photos d'inspiration.

NL Laat u inspireren door onze praktische gids...

- 1 Kiest het product dat u interesseert.
- 2 Ga naar de vermelde pagina in de basis catalogus en vind alle productdetails, alsook inspirerende foto's.

DE Lassen Sie sich inspirieren durch unser praktischen Leitfaden...

- 1 Wählen Sie Ihr Produkt aus.
- 2 Gehen Sie in unseren Hauptkatalog auf die vorgeschlagene Seite. Dort finden Sie alle Produktdetails sowie inspirierende Bilder.

ES Deje que esta práctica guía le ayude...

- 1 Seleccione el producto que le interesa.
- 2 Pase al catálogo principal en la página indicada para obtener los detalles del producto y fotos de ambiente del mismo.

COME AND
VISIT OUR
SHOWROOM

OFFICE &
SHOWROOM

Rue Buisson aux Loups, 7

1400 Nivelles – Belgium

Tel: +32 (0)67 87 87 50

Fax: +32 (0)67 56 15 53

www.globalconcept.com